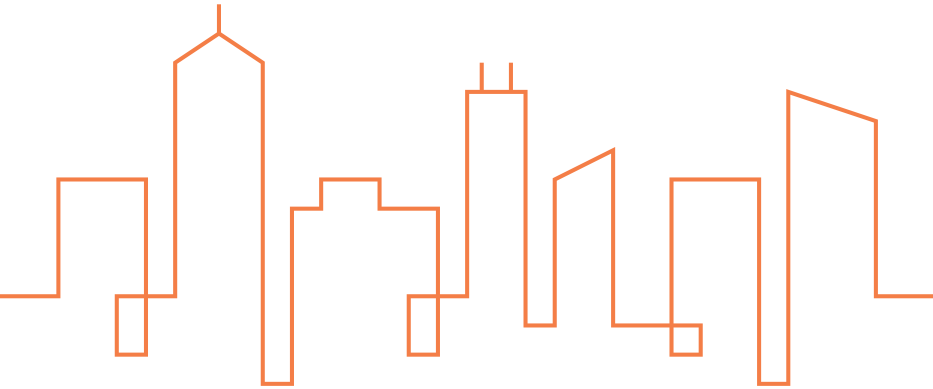


PRICING & SPECIFICATIONS

NOVEMBER 30, 2020



URBANATM
CABINET CO.

URBANATM

CABINET CO.

Your URBANA user experience is our priority. The URBANA Pricing and Specification Guide features hyperlink navigation, so you can quickly locate product specific to your project.

- The Indexes contain links to each unique product.
- The main Table of Contents contains links to the beginning of each section.
- The secondary Table of Contents at the beginning of each section contains links to product subcategories.
- Return to the beginning of each section by clicking on the title inside the black tab.
- Return to the main Table of Contents at any time by clicking on URBANA Cabinets at the bottom of each page.

If your preferred PDF search method is holding the Control and F keys and populating the search box with item codes or words, we've got you covered.

No matter how you choose to use this resource, we're glad you're specifying URBANA!

TABLE OF CONTENTS

Index by Description	2
Index by Code	3
Customer Experience	4
Door Styles	5-6
Product Specifications	7-12
Wall Cabinets	13-27
Base Cabinets	28-36
Universal Design Cabinets	37-40
Tall Cabinets	41-48
Vanity Cabinets	49-57
Fillers	58-62
Panels	63-67
Embellishments	67-68
Mouldings	69-77
Accessories	78-86
Terms, Conditions, and Warranty	87

Description	Code	Page	Description	Code	Page
105 Degree Hinge	105HIN	83	Quarter Round Moulding	MQR	75
170 Degree Hinge	170HIN	83	Roll Out Tray	RO_	80
2 Drawer Base	2BD_ _ C	32	Scribe Moulding	MS	76
3 Drawer Base	BD_ _ C	32	Shelf Clips	SC	82
45 Degree Hinge	45HIN	83	Shelf Kit	SK	81
Attachment Cleat	ATTCLEET	74	Standard Soft-Close Hinge	STDHIN	83
Base Corner Roto	BCR36C	36	Straight Light Rail	MSLR	76
Base Corner Single Door	BC_ _ C	35	Submoulding	MSB	74
Base Double Door	B_ _ C	30	Tall Utility Double Door	T24_ _ C	45-46
Base Drawer Epoxy Glide Set (20")	VDS	84	Tall Utility Single Door	T_ _ _ C	42-44
Base Easy Reach	BER36C	36	Touch Up Kit	TUKIT	80
Base Easy Reach Shelf Kits	BERSK	82	Universal Design, 3 Drawer Base	BD_ _ 32.5C	39
Base Full Height Double Door	BFH_ _ C	31	Universal Design, Base Double Door	B_ _ 32.5C	38
Base Full Height Single Door	BFH_ _ C	31	Universal Design, Base Single Door	B_ _ 32.5C	38
Base Single Door	B_ _ C	29	Universal Design, Base Sink	BS_ _ 32.5C	40
Base Sink	BS_ _ C	33	Universal Design, Base Sink Removable	BSUFH_ _ 32.5C	40
Base Sink Removable	BSUFH_ _ C	34	Vanity Base Drawer	VBD_ _ 32.5C	51
Base Wastebasket	BWB18C	33	Vanity Base Drawer	VBD_ _ C	54
Basic Light Rail Moulding	MLR	77	Vanity Base Full Height Double Door	VBFH_ _ 32.5C	50
Batten Moulding	MB	76	Vanity Base Full Height Double Door	VBFH_ _ C	53
Bumpers	BP	83	Vanity Base Single Door	VB_ _ 32.5C	50
Classic Crown Moulding	MCC	73	Vanity Base Single Door	VB_ _ C	52
Cleat	MCLEET	75	Vanity Base Sink	VBS_ _ 32.5C	51
Cove Moulding	MCV	72	Vanity Base Sink	VBS_ _ C	55
Decorative Hardware	H4_ _	79	Vanity Base Sink Removable	VBSUFH_ _ 32.5C	52
Edge Moulding	ME	77	Vanity Base Sink with Doors and Drawers	VBSD_ _ C	55
Edge Tape	PVCET	80	Vanity Double Drawer Base	VDDB_ _ C	54
Euro Screw Long	ESDGSL	85	Vanity Splash	VSSPLASH	57
Euro Screw Short	ESDGSS	85	Vanity Tops	VTOP	57
Heat Shield	HSS	81	Vanity Wall Sink Base	VWSB_ _ C	56
Laminate Base Filler Panel (Slab)	BFP	66	Wall Corner Double Door	WC_ _ _ _ C	25-26
Laminate Dining Shelf Bracket	MDSB	68	Wall Corner Single Door	WC_ _ _ _ C	25-26
Laminate Filler	F	61	Wall Diagonal Corner	WDC_ _ _ _ C	27
Laminate Filler Base Corner	FBC	62	Wall Diagonal Shelf Kits	WDCSK	82
Laminate Floating Shelves	SF	68	Wall Double Door	W_ _ C	14-22
Laminate Panel	P	63	Wall Floating Shelf Bracket	WCFS	84
Laminate Tall Filler Panel (Slab)	PTFR/PTFL	67	Wall Lift Up Hinge	WLUHIN	84
Laminate Toekick	TK	67	Wall Lift Up Unit	WLU_ _ _ _ C	15
Laminate Wall Filler Panel (Slab)	WFP	65	Wall Refrigerator	WR_ _ _ _ C	22-23
Low Root Screws	LRS	85	Wall Single Door	W_ _ C	17-21
MDF Backing	BACK	86	Wood Base Filler Panel	WBFP	66
Melamine or Thermofoil Overlay Filler	OL	60	Wood Filler	WF	59
Moulding Full Overlay Crown	MFOLCR	73	Wood Moulding Cleat	WMCLEET	70
Moulding Outside Corner	MOC	75	Wood Moulding Corner Round	WMCR	71
Moulding Shaker Crown	MSC	72	Wood Moulding Crown	WMC	69
Nail Screws	NSDBS	85	Wood Moulding Outside Corner	WMOC	70
Oven Cabinet Trim Kit	OCTKU	48	Wood Moulding Scribe	WMS	71
Oven Cabinets	OC33_ _ C	47-48	Wood Moulding Shaker Crown	WMSC	69
Pan Washer Screws	PWS	84	Wood Wall Filler Panel	WWFP	64

Code	Description	Page	Code	Description	Page
105HIN	105 Degree Hinge	83	OCTKU	Oven Cabinet Trim Kit	48
170HIN	170 Degree Hinge	83	OL	Melamine or Thermofoil Overlay Filler	60
2BD__C	2 Drawer Base	32	P	Laminate Panel	63
45HIN	45 Degree Hinge	83	PTFR/PTFL	Laminate Tall Filler Panel (Slab)	67
ATTCLEET	Attachment Cleat	74	PWS	Pan Washer Screws	84
B__32.5C	Universal Design, Base Double Door	38	R0_	Roll Out Tray	80
B__32.5C	Universal Design, Base Single Door	38	SC	Shelf Clips	82
B__C	Base Double Door	30	SF	Laminate Floating Shelves	68
B__C	Base Single Door	29	SK	Shelf Kit	81
BACK	MDF Backing	86	STDHIN	Standard Soft-Close Hinge	83
BC__C	Base Corner Single Door	35	T____C	Tall Utility Single Door	42-44
BCR36C	Base Corner Roto	36	T24__C	Tall Utility Double Door	45-46
BD__32.5C	Universal Design, 3 Drawer Base	39	TK	Laminate Toekick	67
BD__C	3 Drawer Base	32	TUKIT	Touch Up Kit	80
BER36C	Base Easy Reach	36	VB__C	Vanity Base Single Door	52
BERSK	Base Easy Reach Shelf Kits	82	VB__32.5C	Vanity Base Single Door	50
BFH__C	Base Full Height Double Door	31	VBD__32.5C	Vanity Base Drawer	51
BFH__C	Base Full Height Single Door	31	VBD__C	Vanity Base Drawer	54
BFP	Laminate Base Filler Panel (Slab)	66	VBFH__32.5C	Vanity Base Full Height Double Door	50
BP	Bumpers	83	VBFH__C	Vanity Base Full Height Double Door	53
BS__C	Base Sink	33	VBS__32.5C	Vanity Base Sink	51
BS__32.5C	Universal Design, Base Sink	40	VBS__C	Vanity Base Sink	55
BSUFH__32.5C	Universal Design, Base Sink Removable	40	VBSD__C	Vanity Base Sink with Doors and Drawers	55
BSUFH__C	Base Sink Removable	34	VBSUFH__32.5C	Vanity Base Sink Removable	52
BWB18C	Base Wastebasket	33	VDDB__C	Vanity Double Drawer Base	54
ESDGSL	Euro Screw Long	85	VDS	Base Drawer Epoxy Glide Set (20")	84
ESDGSS	Euro Screw Short	85	VSSPLASH	Vanity Splash	57
ET	Edge Tape PVC	80	VTOP	Vanity Tops	57
F	Laminate Filler	61	VWSB__C	Vanity Wall Sink Base	56
FBC	Laminate Filler Base Corner	62	W__C	Wall Double Door	14-22
H4__	Decorative Hardware	79	W__C	Wall Single Door	17-21
HSS	Heat Shield	81	WBFP	Wood Base Filler Panel	66
LRS	Low Root Screws	85	WC____C	Wall Corner Double Door	25-26
MB	Batten Moulding	76	WC____C	Wall Corner Single Door	25-26
MCC	Classic Crown Moulding	73	WCFS	Wall Floating Shelf Bracket	84
MCLEET	Cleat	75	WDC____C	Wall Diagonal Corner	27-27
MCV	Cove Moulding	72	WDCSK	Wall Diagonal Shelf Kits	82
MDSB	Laminate Dining Shelf Bracket	68	WF	Wood Filler	59
ME	Edge Moulding	77	WFP	Laminate Wall Filler Panel (Slab)	65
MFOLCR	Moulding Full Overlay Crown	73	WLU____C	Wall Lift Up Unit	15
MLR	Basic Light Rail Moulding	77	WLUHIN	Wall Lift Up Hinge	84
MOC	Moulding Outside Corner	75	WMC	Wood Moulding Crown	69
MQR	Quarter Round Moulding	75	WMCLEET	Wood Moulding Cleat	70
MS	Scribe Moulding	76	WMCR	Wood Moulding Corner Round	71
MSB	Submoulding	74	WMOC	Wood Moulding Outside Corner	70
MSC	Moulding Shaker Crown	72	WMS	Wood Moulding Scribe	71
MSLR	Straight Light Rail	76	WMSC	Wood Moulding Shaker Crown	69
NSDBS	Nail Screws	85	WR____C	Wall Refrigerator	22-23
OC33__C	Oven Cabinets	47-48	WWFP	Wood Wall Filler Panel	64

URBANA™

CABINET CO.

WHY URBANA?

Manufactured by MasterBrand Cabinets, we offer quality, versatility and product for every cabinet need. We make it easy to select, purchase and complete every project with dedicated professionals, ready to serve you.

OUR STORY

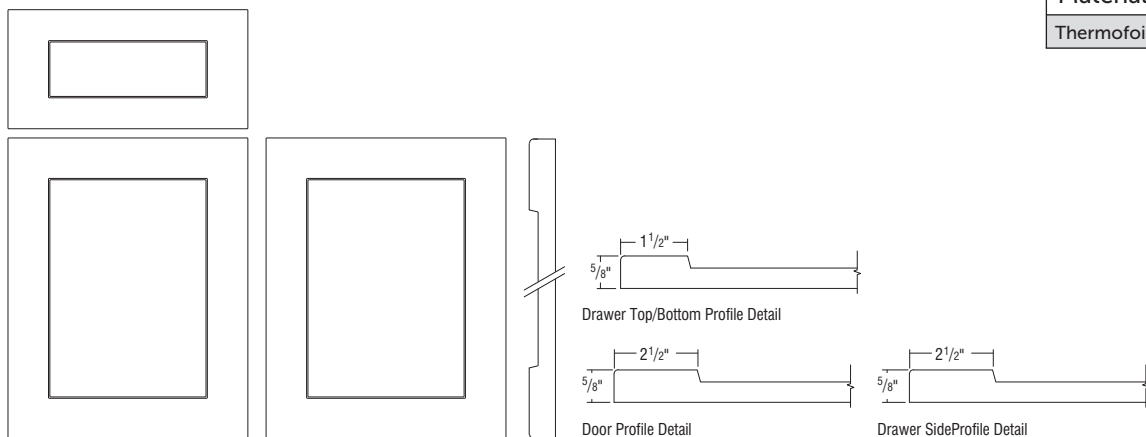
The Urbana Cabinet Co. brings a new point of view to your next multi-family project. Meant for metro living, Urbana resonates with a trend-forward attitude that tops the list for today's downtown dweller. Featuring smartly-styled door options in a myriad of desirable finishes, Urbana cabinets are ideal for both newly constructed multi-family dwellings, and updating those ready for renewal. Owners and renters alike are sure to enjoy the low maintenance and clean styling that Urbana cabinets bring to every unit.

URBANA SUPPORT

Urbana's informed and professional team of area specific sales representatives support your Urbana project needs at every touch point along the project life cycle. Working in tandem with your dealer or designer, your project is managed so that your time can be spent on other project trade details. We'll stand with you until the project is marked complete!

REMY

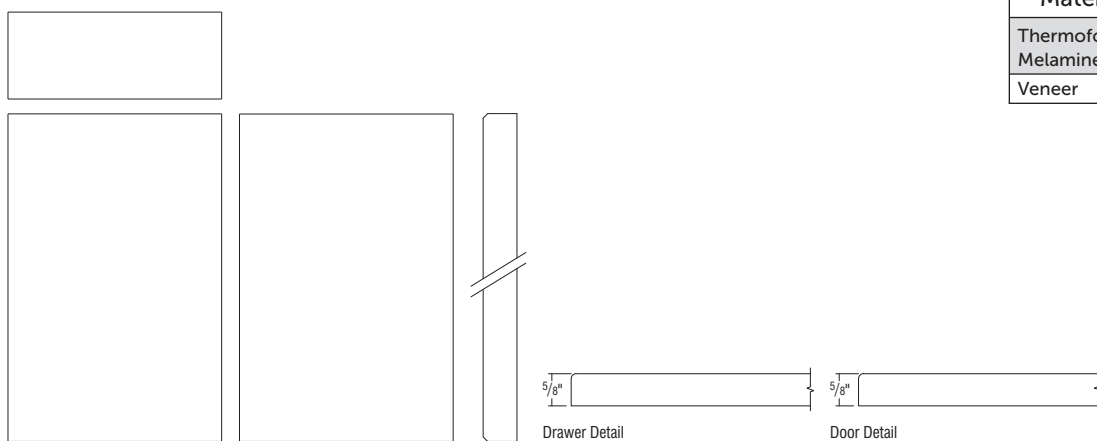
Material	Price Group
Thermofoil	2



- Full Overlay Construction
- 5/8" Thick MDF Door
- Door Panel - square recessed
- Drawer Front - square recessed
- Remy doors and drawer fronts are routed MDF
- Profile - slightly rounded outside edge; chamfered inside edge
- Hardware Recommended

RIVA

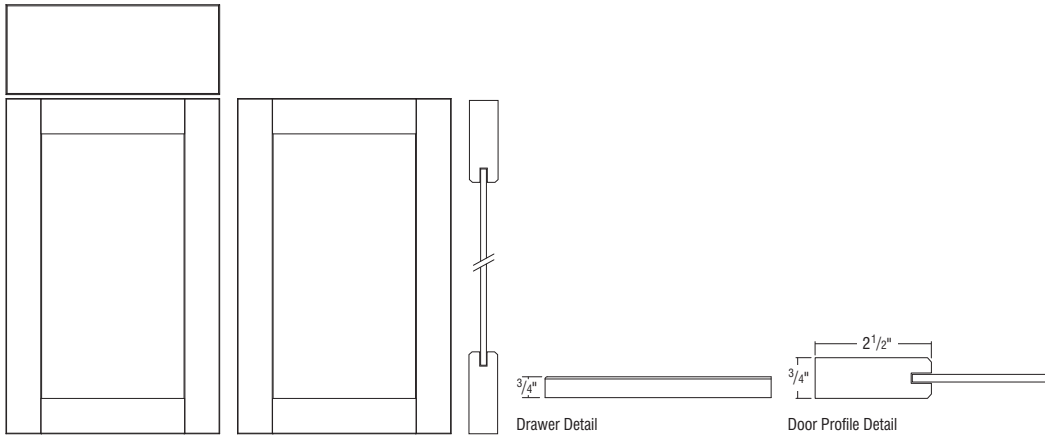
Material	Price Group
Thermofoil and Melamine	1-4
Veneer	2



- Full Overlay Construction
- 5/8" thick Thermofoil, Melamine, or Veneer door
- Slab Door and Drawer Front
- Profile - slightly rounded outside edge for thermofoil; does not apply to melamine or veneer door
- Hardware Recommended

RUSH

Material	Price Group
Wood	2-3

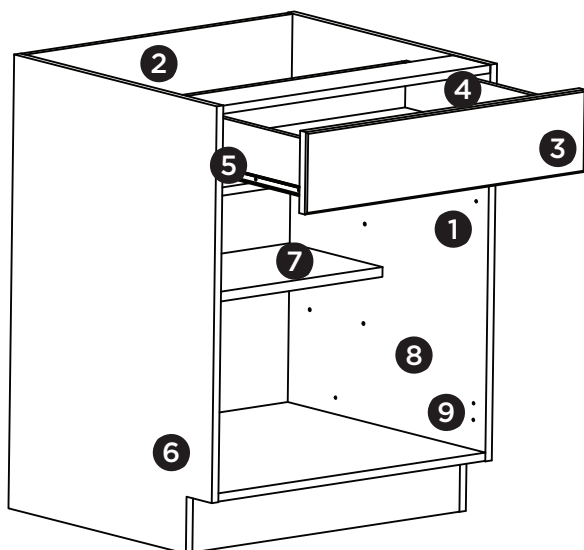


- Full Overlay Construction
- 3/4" Thick Wood Shaker Door
- 3/4" Thick Slab Drawer Front Top Drawer; base drawer cabinets will have 5-piece drawer fronts on bottom 2 drawers
- Door Panel Recessed Veneer
- 2 1/2" Wide Rail
- Profile - slightly rounded outside edge; chamfered inside edge
- Hardware Recommended

PRICE AND STYLE INFORMATION

Group 1	Group 2		Group 3	Group 4
Riva-Slab Melamine • Smooth White	Remy-Shaker Thermofoil • Ash • Moonglow Rush-Wood Shaker • Dusk • Ledgestone	Riva-Slab Melamine • Pampas Riva-Slab Thermofoil • Ash • Moonglow Riva-Slab Veneer • Dusk • Ledgestone	Riva-Slab Melamine • Nightshade • Putty Rush-Wood Shaker • Polar • Sterling Gray	Riva-Slab Melamine • Cityscape • Haze • Phantom Riva-Slab Thermofoil • High Gloss White

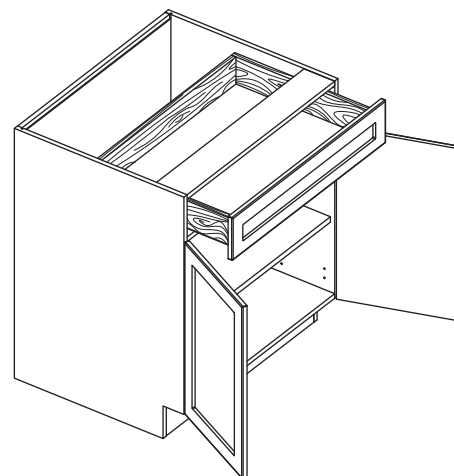
PRODUCT SPECIFICATIONS



- 1 5/8" Particle board sides
- 2 1/2" Furniture board solid back
- 3 5/8" thick door and drawer fronts
- 4 5/8" Solid wood drawer box
- 5 Soft-closing, side-mount, full extension drawer guides
- 6 Laminate exterior matches facing
- 7 3/4" Particle board shelves with natural laminate
- 8 Natural laminate interior
- 9 Soft-closing 6-way adjustable hinges

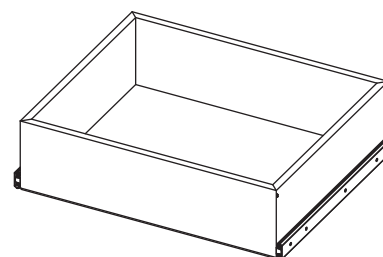
STANDARD DRAWER BOX

- 5/8" solid wood sides, front and back
- 3/16" matching laminate MDF bottom, fully captured on four sides
- Drawer front attaches to drawer box with staples and screws
- Butt joint and pinned construction in four corners
- Finished with a clear catalyzed topcoat
- Side-mount full extension ball bearing drawer glides with integrated soft-close

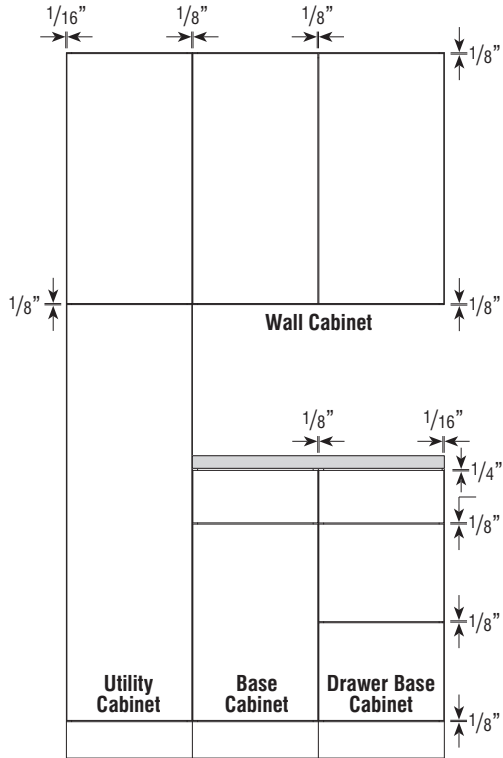


STANDARD ROLL TRAY

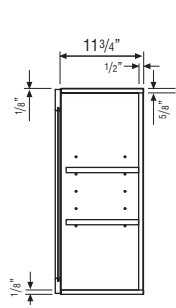
- 1/2" plywood sides, front and back
- 1/2" matching laminate particle board bottom
- Butt joint and pinned construction in four corners
- Finished with a clear catalyzed topcoat
- Side-mount full extension ball bearing drawer glides



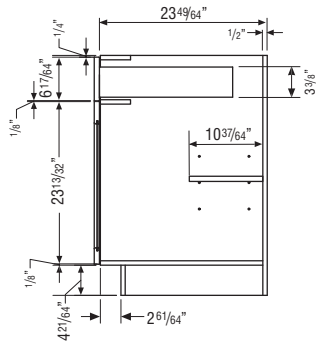
FULL OVERLAY SPECIFICATIONS



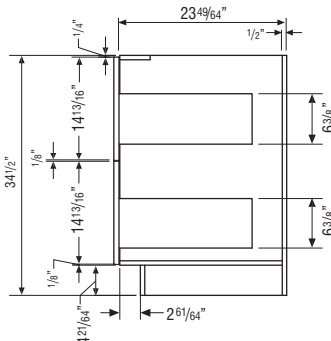
CABINET DIMENSIONS



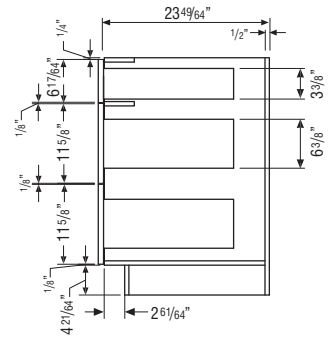
WALL CABINET



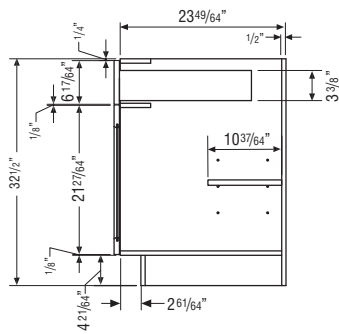
BASE CABINET



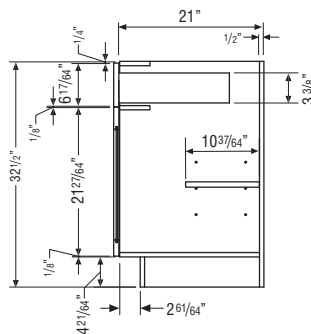
**TWO-DRAWER
BASE CABINET**



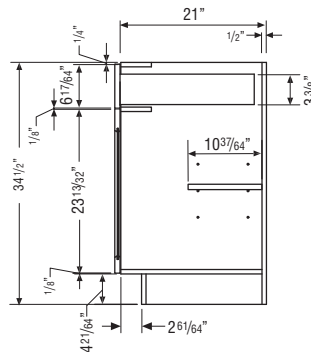
**THREE-DRAWER
BASE CABINET**



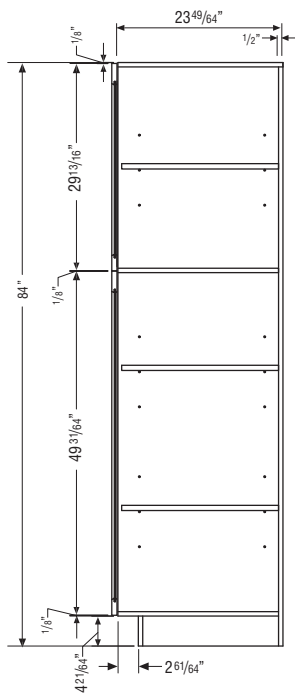
**32 1/2" HIGH
BASE CABINET**



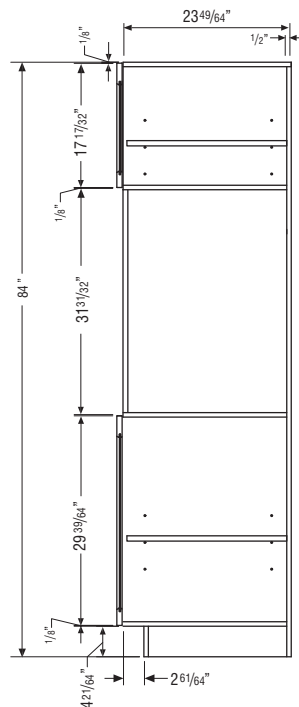
**32 1/2" HIGH
VANITY CABINET**



**34 1/2" HIGH
VANITY CABINET**



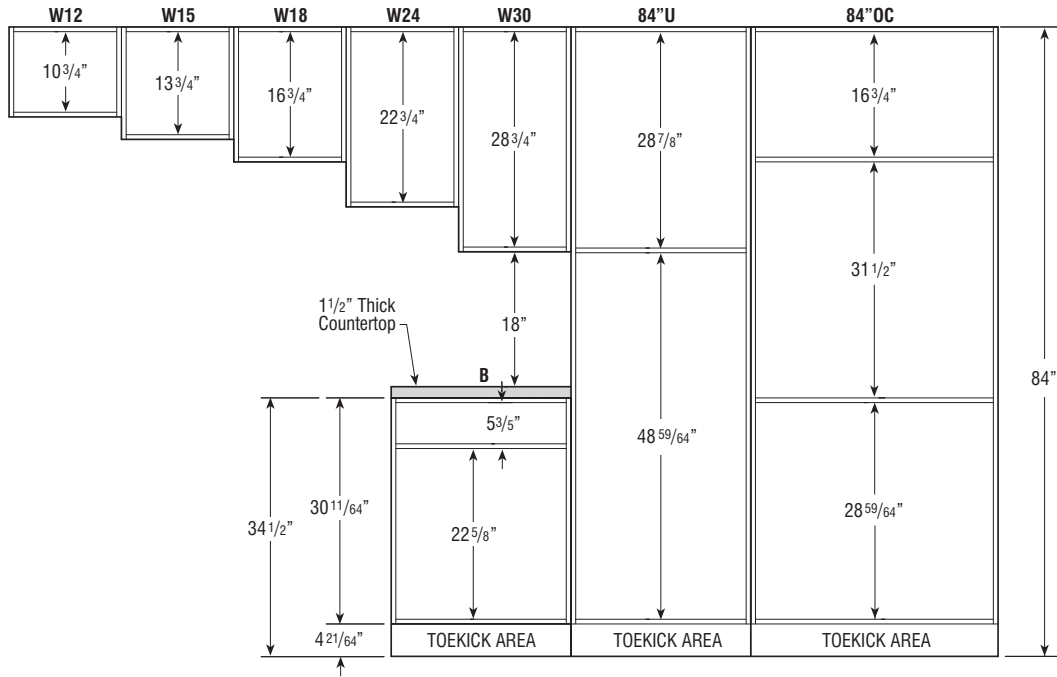
UTILITY CABINET



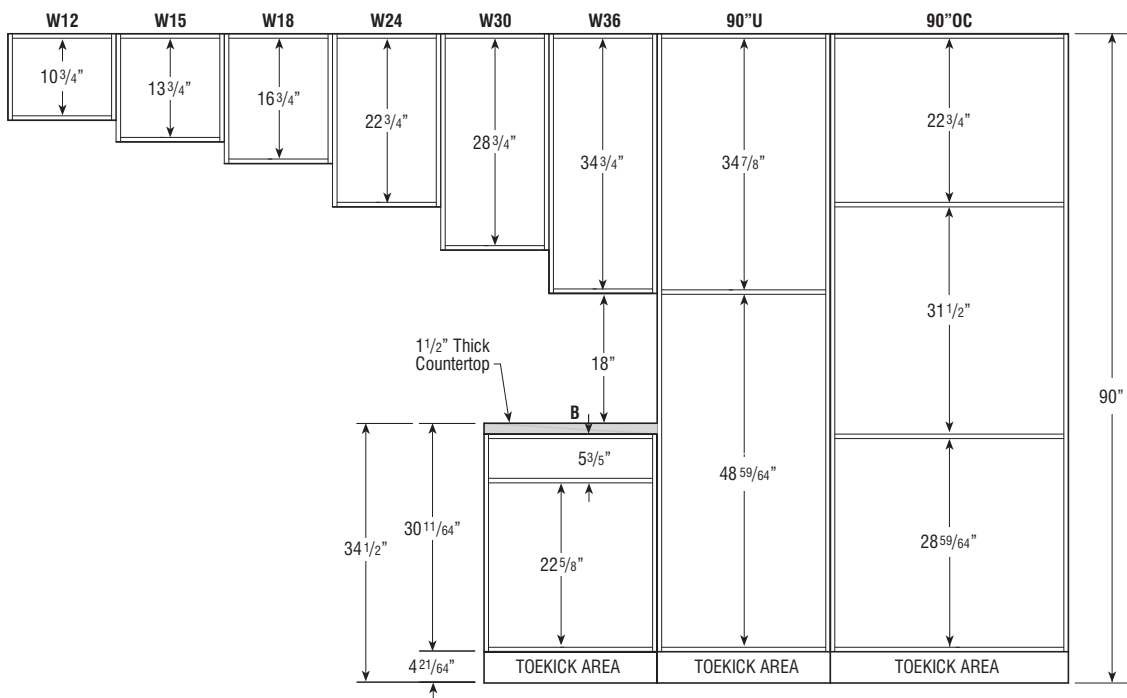
OVEN CABINET

CABINET DIMENSIONS

84" HIGH APPLICATION
 Number after Wall Cabinet Represents Height of Cabinet

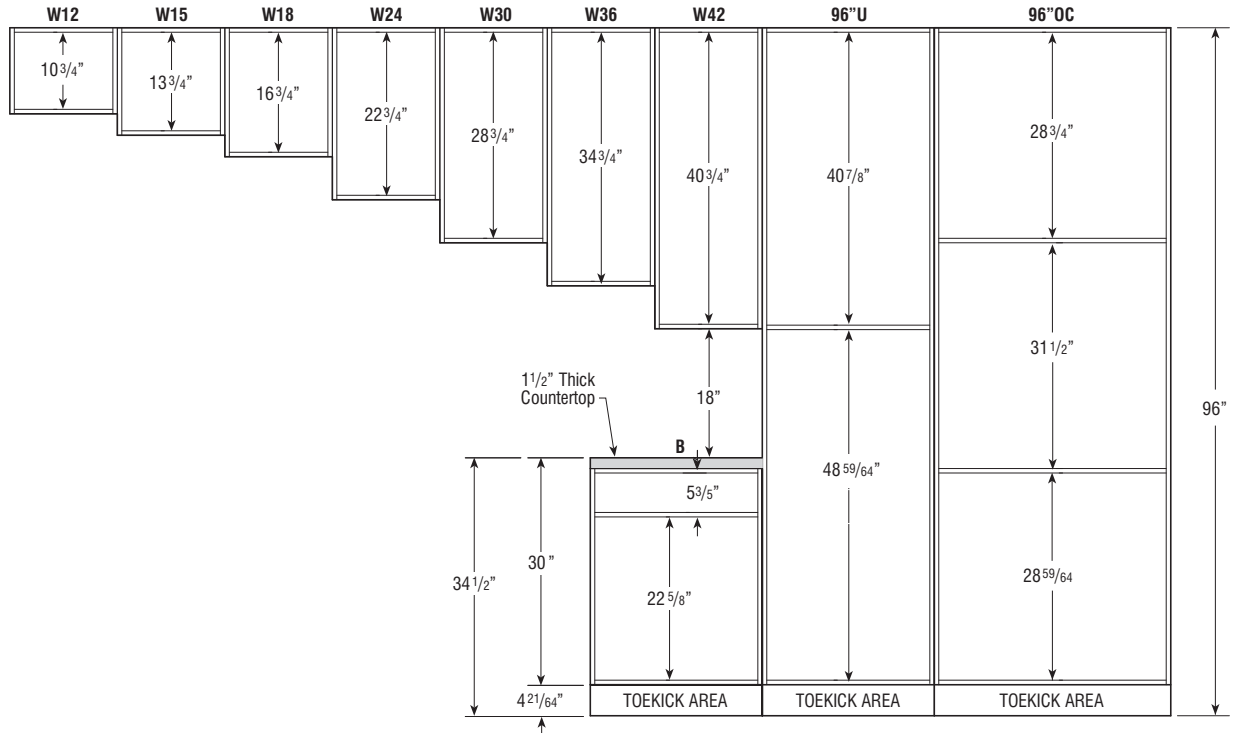


90" HIGH APPLICATION
 Number after Wall Cabinet Represents Height of Cabinet



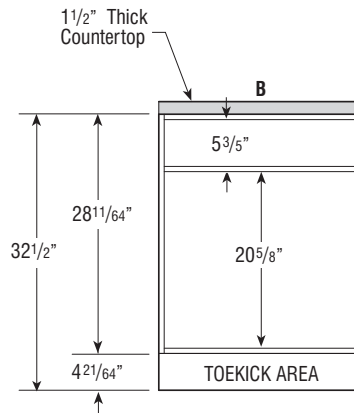
CABINET DIMENSIONS

96" HIGH APPLICATION
 Number after Wall Cabinet Represents Height of Cabinet

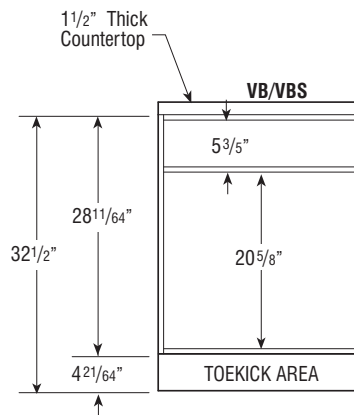


CABINET DIMENSIONS

32 1/2" HIGH BASE CABINETS



32 1/2" HIGH VANITY CABINETS



34 1/2" HIGH VANITY CABINETS

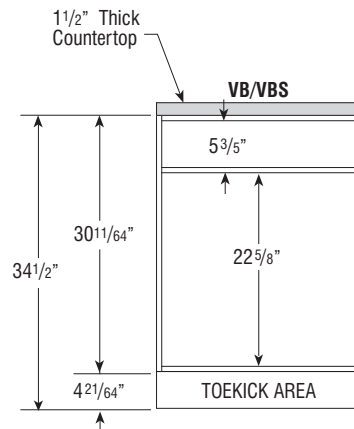


TABLE OF CONTENT – WALL CABINETS



12" Deep Wall

12" High14
15" High14
18" High15
24" High16
27" High16
30" High17
36" High19
42" High21

24" Deep Wall

12" High22
18" High23
24" High23

12" Deep Wall Corner

30" High25
36" High25
42" High26

12" Deep Diagonal Wall

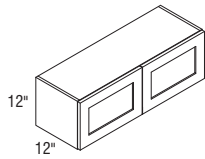
30" High27
36" High27
42" High27

WALL DOUBLE DOOR

12" High

12" Deep

Model	Cubic Feet	1	2	3	4
W3012C	3.0	190	212	244	271
W3312C	3.2	205	228	263	292
W3612C	3.5	212	237	272	303

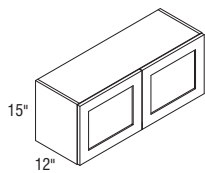


WALL DOUBLE DOOR

15" High

12" Deep

Model	Cubic Feet	1	2	3	4
W3015C	3.6	195	216	250	278
W3315C	4.0	209	234	269	299
W3615C	4.4	216	241	279	309

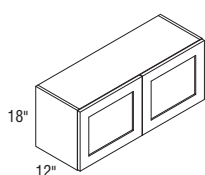


WALL DOUBLE DOOR

18" High

12" Deep

Model	Cubic Feet	1	2	3	4
W2418C	3.5	219	245	282	313
W3018C	4.3	226	253	291	324
W3318C	4.8	234	259	300	334
W3618C	5.2	242	269	310	345



WALL LIFT UP UNIT

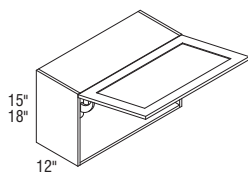
15" High

18" High

12" Deep

Model	Cubic Feet	1	2	3	4
WLU3015C	3.6	223	249	288	320
WLU3615C	4.4	249	278	320	355
WLU3018C	4.3	260	290	336	373
WLU3618C	5.2	279	310	357	397

- 110° hinges assist in standard hinges to hold door up when open.
- Shelves not available with cabinets less than 24" in height.
- Wall hinge mechanism strength is adjustable.
- Wall lift up hinge not available in soft-close.
- 15" units need at least 5 1/2" of clearance above cabinet.
- 18" units need at least 6 1/2" of clearance above cabinet.

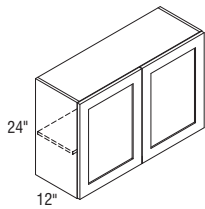


WALL DOUBLE DOOR

24" High

12" Deep

Model	Cubic Feet	1	2	3	4
W2424C	4.6	251	280	323	359
W3024C	5.7	255	285	328	365
W3324C	6.3	266	296	342	380
W3624C	6.9	277	308	355	394

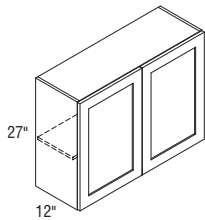


WALL DOUBLE DOOR

27" High

12" Deep

Model	Cubic Feet	1	2	3	4
W3027C New	5.6	274	306	353	392
W3327C New	6.2	295	329	379	421



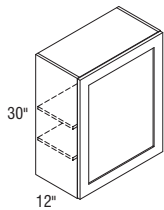
WALL SINGLE DOOR

30" High

12" Deep

Model	Cubic Feet	1	2	3	4
W930C	2.2	167	185	214	239
W1230C	2.9	178	199	229	254
W1530C	3.6	193	214	247	275
W1830C	4.3	205	228	263	292
W2130C	5.0	220	246	284	315

•Cabinet hinged on the right; may be flipped for left hinge application.

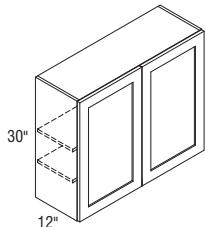


WALL DOUBLE DOOR

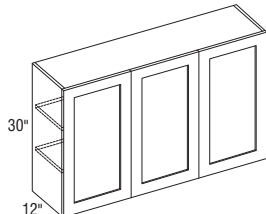
30" High

12" Deep

Model	Cubic Feet	1	2	3	4
W2430C	5.7	277	308	355	394
W2730C	6.4	281	312	361	402
W3030C	7.1	292	326	376	418
W3330C	7.8	310	346	398	444
W3630C	8.5	321	357	413	458
W3930C	9.2	348	388	448	497
W4230C	9.2	364	406	468	520
W4830C	9.9	412	459	529	588



W2430C-W3630C Butt doors
W3930C-W4230C Center mullion



W4830C Center Mullion

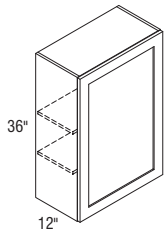
WALL SINGLE DOOR

36" High

12" Deep

Model	Cubic Feet	1	2	3	4
W936C	2.7	207	230	266	295
W1236C	3.5	221	247	285	317
W1536C	4.3	244	271	313	348
W1836C	5.2	252	281	324	360
W2136C	6.0	283	315	364	405

•Cabinet hinged on the right; may be flipped for left hinge application.

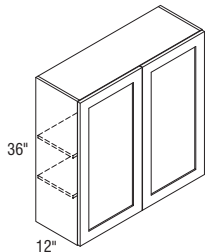


WALL DOUBLE DOOR

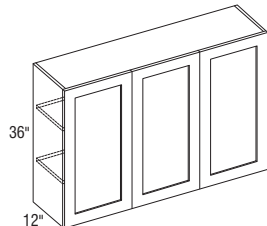
36" High

12" Deep

Model	Cubic Feet	1	2	3	4
W2436C	6.8	349	389	450	499
W2736C	7.7	354	394	456	507
W3036C	8.5	364	406	468	520
W3336C	9.4	387	431	498	553
W3636C	10.2	406	452	521	580
W3936C	11.0	426	475	548	608
W4236C	11.9	444	494	570	633
W4836C	13.5	500	557	642	714



W2436C-W3636C Butt doors
W3936C-W4236C Center mullion



W4836C Center Mullion

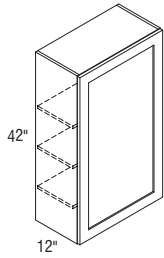
WALL SINGLE DOOR

42" High

12" Deep

Model	Cubic Feet	1	2	3	4
W1242C	4.1	240	267	308	342
W1542C	5.0	264	294	339	377
W1842C	6.0	291	325	375	416
W2142C	7.0	317	352	408	453

•Cabinet hinged on the right; may be flipped for left hinge application.

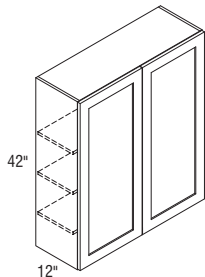


WALL DOUBLE DOOR

42" High

12" Deep

Model	Cubic Feet	1	2	3	4
W2442C	8.0	388	432	499	555
W2742C	8.9	395	441	509	565
W3042C	9.9	413	460	531	590
W3342C	10.9	439	490	564	627
W3642C	11.9	459	512	590	656
W3942C	12.8	484	539	623	692
W4242C	13.8	508	565	652	725



12"
W2442C-W3642C Butt doors
W3942C-W4242C Center mullion

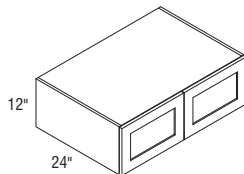
WALL REFRIGERATOR

12" High

24" Deep

Model	Cubic Feet	1	2	3	4
WR3012C	5.3	144	161	185	206
WR3612C	6.8	251	280	323	359

- 24" deep cabinets must be supported on three surfaces when mounted.
- Load limit is 15 lbs. per square foot of load bearing surface.



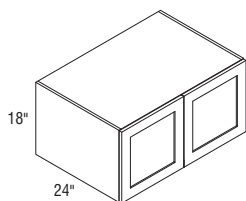
WALL REFRIGERATOR

18" High

24" Deep

Model	Cubic Feet	1	2	3	4
WR3018C	7.5	184	205	236	262
WR3618C	10.0	270	301	347	386

- 24" deep cabinets must be supported on three surfaces when mounted.
- Load limit is 15 lbs. per square foot of load bearing surface.



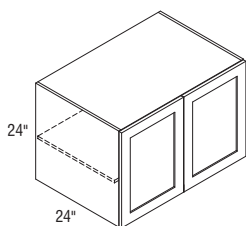
WALL REFRIGERATOR

24" High

24" Deep

Model	Cubic Feet	1	2	3	4
WR3024C	10.0	211	236	271	303
WR3324C	11.1	243	271	312	348
WR3624C	13.1	311	347	399	445
WR3924C	14.2	357	398	460	511

- 24" deep cabinets must be supported on three surfaces when mounted.
- Load limit is 15 lbs. per square foot of load bearing surface.

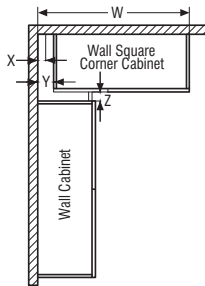


WR3024C-WR3624C Butt doors
WR3924C Center mullion

WALL CORNER CABINETS

SKU	X			Y	Z		W	
	Actual Cabinet Width	Min. Pull	Min. Pull w/Hardware	Max. Pull	Min. Filler Required	Min. Filler Required w/Hardware	Min. Pull From Wall To End of Cabinet	Max Pull From Wall To End of Cabinet
WC2430C	24"	1"	2 1/2"	11 3/4"	1"	2 1/2"	25"	35 3/4"
WC3030C	30"	1"	2 1/2"	11 3/4"	1"	2 1/2"	31"	41 3/4"
WC3630C	36"	1"	2 1/2"	11 3/4"	1"	2 1/2"	37"	47 3/4"
WC4230C	42"	1"	2 1/2"	11 3/4"	1"	2 1/2"	43"	53 3/4"
WC4830C	48"	1"	2 1/2"	11 3/4"	1"	2 1/2"	49"	59 3/4"
WC2436C	24"	1"	2 1/2"	11 3/4"	1/2"	1/2"	25"	35 3/4"
WC3036C	30"	1"	2 1/2"	11 3/4"	1"	2 1/2"	31"	41 3/4"
WC3636C	36"	1"	2 1/2"	11 3/4"	1"	2 1/2"	37"	47 3/4"
WC3042C	30"	1"	2 1/2"	11 3/4"	1"	2 1/2"	31"	41 3/4"
WC3642C	36"	1"	2 1/2"	11 3/4"	1"	2 1/2"	37"	47 3/4"

- Wall corner cabinets may be installed flush to the wall (left) or pulled up to 3" away from wall (right) to accommodate odd dimensions in a kitchen design. In either case, the adjoining run of 12" wall cabinets plus a 3" filler will butt against the solid-wood panel.
- When a cabinet is "pulled" it will use proportionally more wall space, for example, a 30" wide WC pulled 2" will use 32" of space.
- Blind side of wall corner cabinets cannot be installed next to a range hood or microwave shelf unit due to door interference.



WALL CORNER SINGLE DOOR

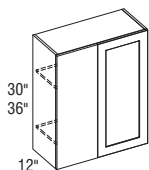
30" High

36" High

12" Deep

Model	Cubic Feet	1	2	3	4
WC2430C	5.7	212	237	272	303
WC3030C	7.1	239	266	307	341
WC2436C	6.8	264	294	339	377
WC3036C	8.5	295	329	380	422

•Left blind shown; cabinet may be flipped for right blind application.



WALL CORNER DOUBLE DOOR

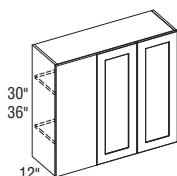
30" High

36" High

12" Deep

Model	Cubic Feet	1	2	3	4
WC3630C	8.5	278	309	356	396
WC4230C	9.9	317	352	408	453
WC4830C	11.3	348	388	448	497
WC3636C	10.2	343	382	441	490

•Left blind shown; cabinet may be flipped for right blind application.



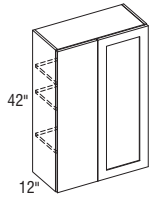
WALL CORNER SINGLE DOOR

42" High

12" Deep

Model	Cubic Feet	1	2	3	4
WC3042C	9.9	343	382	441	490

•Left blind shown; cabinet may be flipped for right blind application.



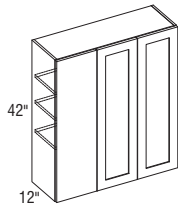
WALL CORNER DOUBLE DOOR

42" High

12" Deep

Model	Cubic Feet	1	2	3	4
WC3642C	11.9	402	447	516	573

•Left blind shown; cabinet may be flipped for right blind application.



WALL DIAGONAL CORNER

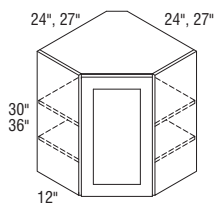
30" High

36" High

12" Deep

Model	Cubic Feet	1	2	3	4
WDC2430C	5.7	306	341	393	437
WDC2436C	6.8	359	399	461	513
WDC2736C	9.4	385	429	495	550

- Cabinet hinged on the right; may be flipped for left hinge application.
- Soft-close hinges are not available.
- Cabinets must be attached to at least one run of cabinets and both back walls.



WALL DIAGONAL CORNER

42" High

12" Deep

Model	Cubic Feet	1	2	3	4
WDC2442C	8.0	446	496	573	636

- Cabinet hinged on the right; may be flipped for left hinge application.
- Soft-close hinges are not available.
- Cabinets must be attached to at least one run of cabinets and both back walls.

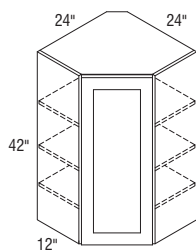


TABLE OF CONTENTS – BASE CABINETS



34 1/2" High, 24" Deep

Base Single Door29
Base Double Door30
Base Full Height30
Drawer Base32
Base Wastebasket33
Base Sink34
Base Sink Removable34
Base Corner35

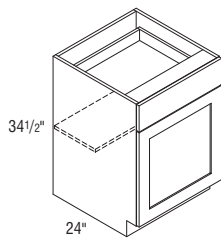
BASE SINGLE DOOR

34½" High

24" Deep

Model	Cubic Feet	1	2	3	4
B12C	6.4	238	265	305	339
B15C	7.9	244	271	313	348
B18C	9.5	255	285	328	365
B21C	11.0	277	308	355	394

- Cabinet hinged on the right; door may be flipped for left hinge application.
- Roll tray kits available for 15"-21" widths.



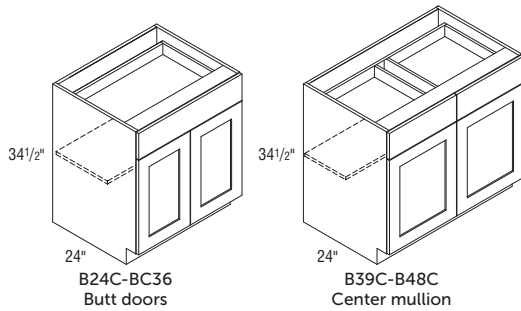
BASE DOUBLE DOOR

34½" High

24" Deep

Model	Cubic Feet	1	2	3	4
B24C	12.6	336	374	431	479
B27C	14.1	348	388	448	497
B30C	15.6	364	406	468	520
B33C	17.2	388	432	499	555
B36C	18.7	406	452	521	580
B39C	20.2	427	476	550	610
B42C	21.8	438	488	563	626
B48C	24.9	483	538	622	690

•Roll tray kits available.



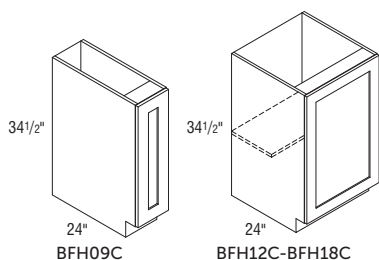
BASE FULL HEIGHT SINGLE DOOR

34½" High

24" Deep

Model	Cubic Feet	1	2	3	4
BFH09C	4.9	208	233	267	296
BFH12C	6.4	220	246	284	315
BFH15C	7.9	233	258	299	331
BFH18C	9.5	242	269	310	345

- Cabinet hinged on the right; door may be flipped for left hinge application.
- Roll tray kits available for 15"-18" widths.



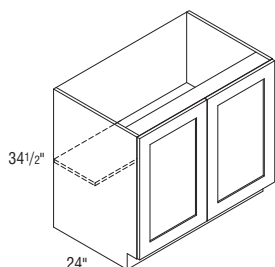
BASE FULL HEIGHT DOUBLE DOOR

34½" High

24" Deep

Model	Cubic Feet	1	2	3	4
BFH24C	12.6	307	342	394	439
BFH30C	15.6	318	353	409	454
BFH33C	17.2	339	378	435	484
BFH36C	18.7	353	393	455	505

- Roll tray kits available.

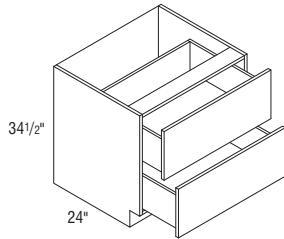


2 DRAWER BASE

34 1/2" High

24" Deep

Model	Cubic Feet	1	2	3	4
2BD30C New	15.6	691	770	888	987
2BD36C New	18.7	770	858	990	1100

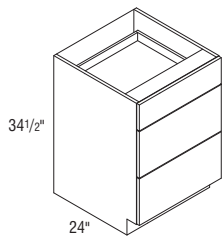


3 DRAWER BASE

34 1/2" High

24" Deep

Model	Cubic Feet	1	2	3	4
BD12C	5.8	319	359	411	458
BD15C	7.9	322	359	414	460
BD18C	9.5	355	396	457	508
BD21C	11.0	382	425	491	546
BD24C	12.6	399	446	514	571
BD30C	15.6	705	786	906	1007
BD36C	18.7	786	875	1010	1122



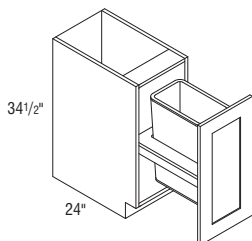
BASE WASTEBASKET

34½" High

24" Deep

Model	Cubic Feet	1	2	3	4
BWB18C New	9.5	421	470	541	602

• Includes one 50 quart wastebasket.



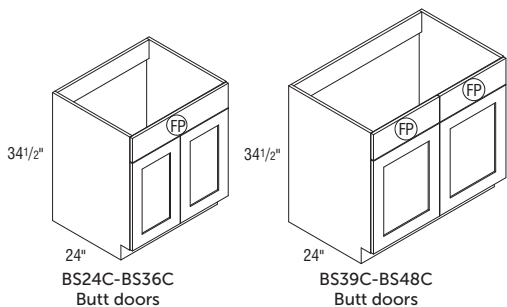
BASE SINK

34½" High

24" Deep

Model	Cubic Feet	1	2	3	4
BS24C	12.6	305	339	391	434
BS30C	15.6	318	353	409	454
BS33C	17.2	340	379	437	486
BS36C	18.7	348	388	448	497
BS39C	20.2	365	408	469	521
BS42C	21.8	379	422	488	542
BS48C	24.9	422	470	543	602

•Base Sink cabinets do not include a center mullion.



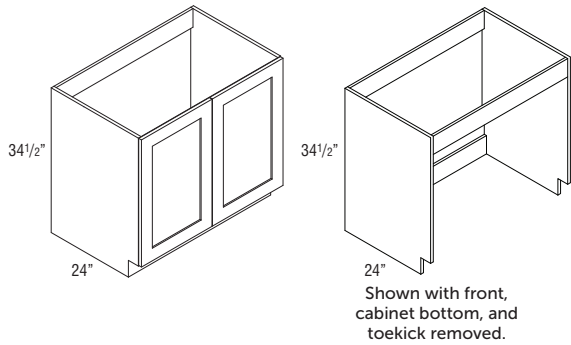
BASE SINK REMOVABLE

34 1/2" High

24" Deep

Model	Cubic Feet	1	2	3	4
BSUFH33C	15.8	513	572	660	732
BSUFH36C	17.3	540	602	694	771

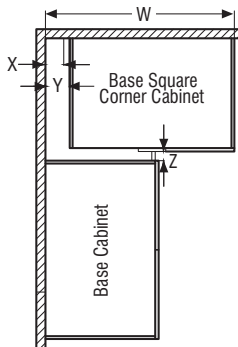
- Cabinet must be supported on both sides. Not intended for end of run.
- Removable bottom and toekick.



BASE CORNER CABINETS

SKU	X			Y	Z		W	
	Actual Cabinet Width	Min. Pull	Min. Pull w/Hardware	Max. Pull	Min. Filler Required	Min. Filler Required w/Hardware	Min. Pull From Wall To End of Cabinet	Max Pull From Wall To End of Cabinet
BC30C	30"	7 1/2"	10"	12"	1"	2 1/2"	37 1/2"	42"
BC33C	33"	6"	8 1/2"	10 1/2"	1"	2 1/2"	39"	43 1/2"
BC36C	36"	4 1/2"	7"	9"	1"	2 1/2"	40 1/2"	45"
BC39C	39"	3"	5 1/2"	7 1/2"	1"	2 1/2"	42"	46 1/2"

- BCs use the wall space the nomenclature implies.
- Remember to use 3" filler on adjoining cabinets.
- The adjoining run of cabinets will cover the void.



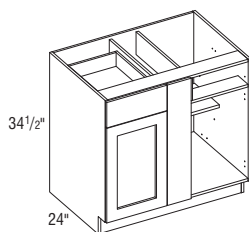
BASE CORNER SINGLE DOOR

34 1/2" High

24" Deep

Model	Cubic Feet	1	2	3	4
BC30C	18.7	325	362	418	464
BC33C	20.2	351	391	452	502
BC36C	21.8	369	411	474	526
BC39C	24.9	433	483	557	620

- Left blind shown; door and drawer can be reversed for right blind application.
- Filler required for installation. Must be ordered separately.



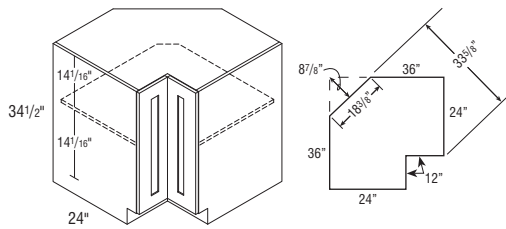
BASE EASY REACH

34 1/2" High

24" Deep

Model	Cubic Feet	1	2	3	4
BER36C	18.7	644	719	830	921

- Wall width is 36" x 36".
- Decorative hardware screws must be countersunk to prevent scratching of adjacent cabinets and face frame of BER.
- Not recommended for use next to an appliance deeper than standard cabinet depth.
- Soft-close not available.



Due to the fixed shelves mounting shelves cannot be retrofitted.

BASE CORNER ROTO

34 1/2" High

24" Deep

Model	Cubic Feet	1	2	3	4
BCR36C	18.7	877	977	1127	1253

- Wall width is 36" x 36".
- Features two plastic shelves.
- Decorative hardware screws must be countersunk to prevent scratching of adjacent cabinets and face frame of BCR.
- Not recommended for use next to an appliance deeper than standard cabinet depth.
- Soft-close not available.

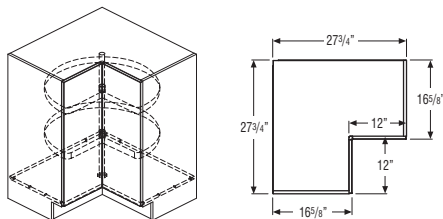
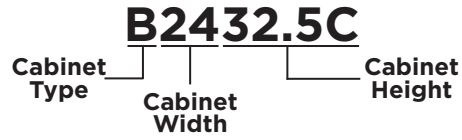


TABLE OF CONTENTS – UNIVERSAL DESIGN CABINETS



32 1/2" High, 24" Deep

Universal Design, Base Single Door	38
Universal Design, Base Double Door	38
Universal Design Drawer Base	39
Universal Design Base Sink	40
Universal Design Base Sink Removable	40

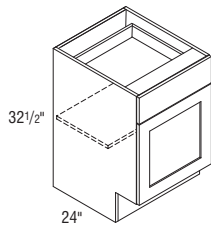
UNIVERSAL DESIGN, BASE SINGLE DOOR

32 1/2" High

24" Deep

Model	Cubic Feet	1	2	3	4
B1232.5C	6.0	283	315	364	405
B1532.5C	7.5	301	336	386	429
B1832.5C	8.9	315	351	406	451
B2132.5C	10.4	333	371	427	475

- Cabinet hinged on the right; door may be flipped for left hinge application.
- Roll tray kits available for 15"-21" widths.



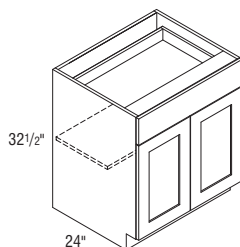
UNIVERSAL DESIGN, BASE DOUBLE DOOR

32 1/2" High

24" Deep

Model	Cubic Feet	1	2	3	4
B2432.5C	11.8	407	452	521	580
B2732.5C	13.3	432	482	556	619
B3032.5C	14.7	457	509	588	653
B3332.5C	16.2	479	534	617	685
B3632.5C	17.6	501	558	644	717

- Roll tray kits available.

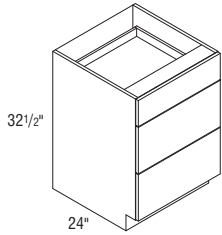


UNIVERSAL DESIGN, 3 DRAWER BASE

32½" High

24" Deep

Model	Cubic Feet	1	2	3	4
BD1232.5C	5.4	467	521	606	677
BD1532.5C	7.5	494	550	635	706
BD1832.5C	8.9	538	599	692	769
BD2132.5C	10.4	564	629	726	806
BD2432.5C	11.8	591	659	760	844



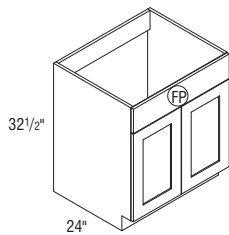
UNIVERSAL DESIGN, BASE SINK

32 1/2" High

24" Deep

Model	Cubic Feet	1	2	3	4
BS3032.5C	14.7	428	477	551	613
BS3632.5C	17.6	469	523	603	671

•Base Sink cabinets do not include a center mullion.



UNIVERSAL DESIGN, BASE SINK REMOVABLE

32 1/2" High

24" Deep

Model	Cubic Feet	1	2	3	4
BSUFH3332.5C	16.2	513	572	660	732
BSUFH3632.5C	17.6	540	602	694	771

•Cabinet must be supported on both sides. Not intended for end of run.
 •Removable bottom and toe-kick.

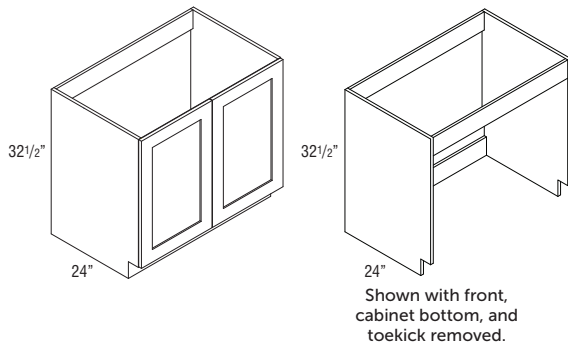
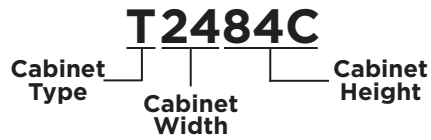


TABLE OF CONTENTS – TALL CABINETS



24" Deep Utility Single Door

84" High42
90" High43
96" High44

24" Deep Utility Double Door

84" High45
90" High45
96" High46

24" Deep Single Oven

84" High47
90" High47
96" High48
Oven Cabinet Trim Kit48

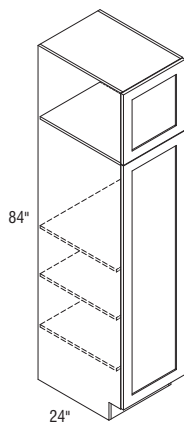
TALL UTILITY SINGLE DOOR

84" High

24" Deep

Model	Cubic Feet	1	2	3	4
T1584C	19.1	519	579	668	742
T1884C	22.8	608	678	783	870
T2184C	26.5	670	746	861	956

- Roll tray kits available.
- All bottom doors on Tall cabinets with horizontal grain feature two panel construction.



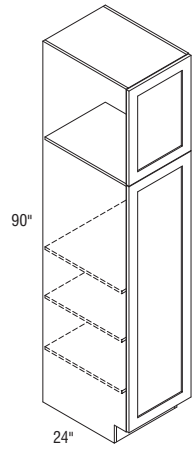
TALL UTILITY SINGLE DOOR

90" High

24" Deep

Model	Cubic Feet	1	2	3	4
T1590C	20.5	669	745	860	956
T1890C	24.4	744	830	956	1062

- Roll tray kits available.
- All bottom doors on Tall cabinets with horizontal grain feature two panel construction.



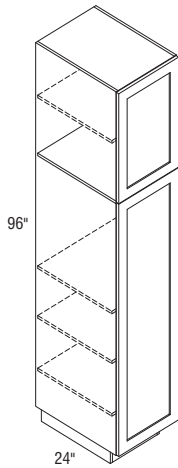
TALL UTILITY SINGLE DOOR

96" High

24" Deep

Model	Cubic Feet	1	2	3	4
T1596C	21.8	761	847	978	1087
T1896C	26.0	850	947	1093	1215

- Separate pedestal base shipped unattached on 96" tall.
- Roll tray kits available.
- All bottom doors on Tall cabinets with horizontal grain feature two panel construction.



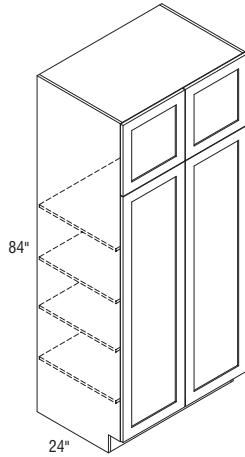
TALL UTILITY DOUBLE DOOR

84" High

24" Deep

Model	Cubic Feet	1	2	3	4
T2484C	30.2	766	853	984	1094

- Roll tray kits available.
- All bottom doors on Tall cabinets with horizontal grain feature two panel construction.



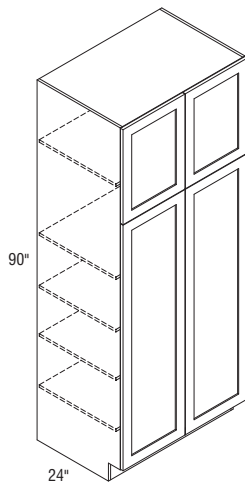
TALL UTILITY DOUBLE DOOR

90" High

24" Deep

Model	Cubic Feet	1	2	3	4
T2490C	32.3	934	1041	1200	1334

- Roll tray kits available.
- All bottom doors on Tall cabinets with horizontal grain feature two panel construction.



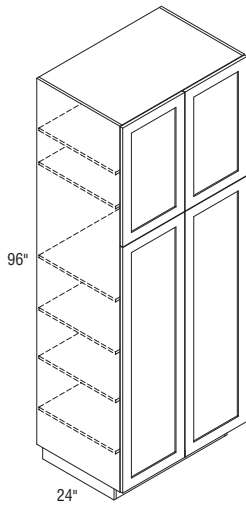
TALL UTILITY DOUBLE DOOR

96" High

24" Deep

Model	Cubic Feet	1	2	3	4
T2496C	34.5	1069	1191	1374	1527

- Separate pedestal base shipped unattached on 96" tall.
- Roll tray kits available.
- All bottom doors on Tall cabinets with horizontal grain feature two panel construction.



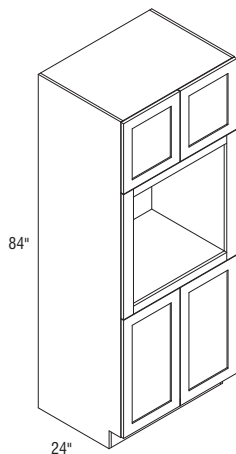
OVEN CABINET

84" High

24" Deep

Model	Cubic Feet	1	2	3	4
OC3384C	41.3	927	1032	1191	1323

•Confirm a heat shield is built into your appliance by the manufacturer.



Oven Cabinet Cut Out Dimensions

SKU	Min Oven Opening	Max Oven Opening	Upper Cabinet Opening
OC3384C	27" x 24"	31 1/2" x 60"	27" x 15"

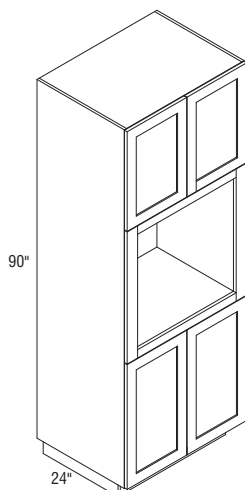
OVEN CABINET

90" High

24" Deep

Model	Cubic Feet	1	2	3	4
OC3390C	44.2	1125	1254	1446	1607

•Confirm a heat shield is built into your appliance by the manufacturer.



Oven Cabinet Cut Out Dimensions

SKU	Min Oven Opening	Max Oven Opening	Upper Cabinet Opening
OC3390C	27" x 24"	31 1/2" x 60"	27" x 21"

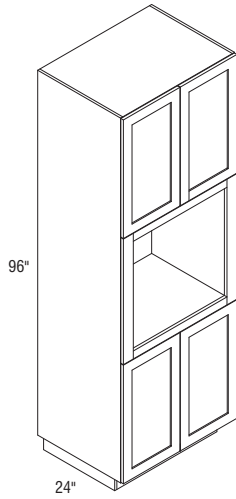
OVEN CABINET

96" High

24" Deep

Model	Cubic Feet	1	2	3	4
OC3396C	47.1	1275	1421	1639	1821

- Confirm a heat shield is built into your appliance by the manufacturer.
- Separate pedestal base shipped unattached on 96" tall.



Oven Cabinet Cut Out Dimensions

SKU	Min Oven Opening	Max Oven Opening	Upper Cabinet Opening
OC3396C	27" x 24"	31 1/2" x 60"	27" x 27"

OVEN CABINET TRIM KIT

96" High

24" Deep

Model	Cubic Feet	1	2	3	4
OCTKU	0.4	106	230	237	264

- Nightshade, Pampas, and Putty grain patterns run vertical.
- Cityscape, Haze and Phantom grain patterns run horizontal.
- 5/8" thick laminate furniture board on Remy and Riva styles; 3/4" thick laminate furniture board on and Rush styles.
- Edgebanded on all four sides.

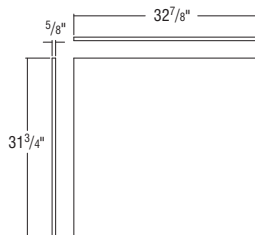
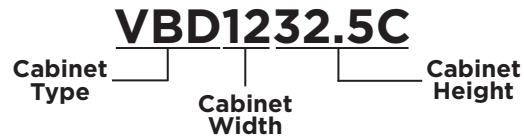


TABLE OF CONTENTS – VANITY CABINETS



32 1/2" High, 21" Deep

Vanity Base with Drawer50
Vanity Drawer Base51
Vanity Base Sink51
Vanity Base Sink Removable52

34 1/2" High, 21" Deep

Vanity Base52
Vanity Drawer Base54
Vanity Base Sink55
Base Sink with Drawers and Doors55

Vanity Wall Unit

Vanity Wall Sink Base56
-----------------------------	-----

Vanity Tops

Vanity Tops57
Vanity Splash57

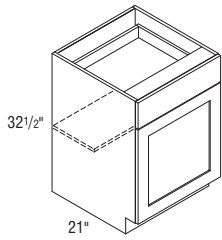
VANITY BASE SINGLE DOOR

32½" High

21" Deep

Model	Cubic Feet	1	2	3	4
VB1232.5C	5.3	238	264	305	339
VB1532.5C	6.6	244	271	313	348
VB1832.5C	7.9	255	285	328	365

•Cabinet hinged on the right; door may be flipped for left hinge application.

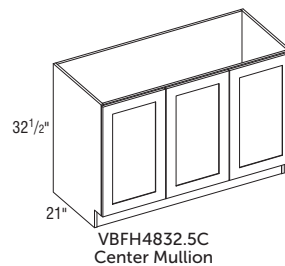
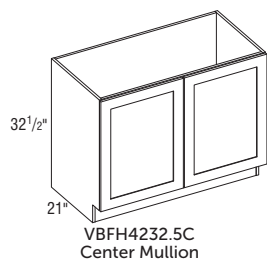
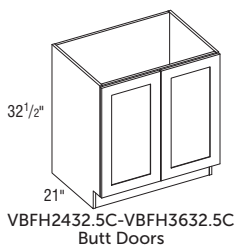


VANITY BASE FULL HEIGHT DOUBLE DOOR

32½" High

21" Deep

Model	Cubic Feet	1	2	3	4
VBFH2432.5C	10.4	265	295	341	379
VBFH2732.5C	11.7	279	310	357	397
VBFH3032.5C	13.0	318	353	409	454
VBFH3332.5C	14.3	322	359	414	460
VBFH3632.5C	15.5	341	380	438	487
VBFH4232.5C	18.1	372	414	478	531
VBFH4832.5C	20.6	407	453	522	581

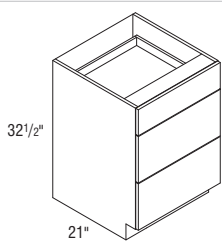


VANITY BASE DRAWER

32½" High

21" Deep

Model	Cubic Feet	1	2	3	4
VBD1232.5C	4.8	307	342	394	438
VBD1532.5C	6.0	323	360	416	461
VBD1832.5C	7.2	350	390	450	499
VBD2132.5C	8.4	371	413	477	529



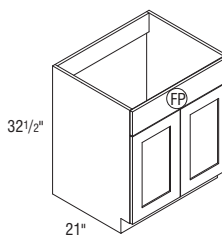
VANITY BASE SINK

32½" High

21" Deep

Model	Cubic Feet	1	2	3	4
VBS2432.5C	9.5	387	430	504	566
VBS3032.5C	11.8	428	477	551	613
VBS3632.5C	14.2	469	523	603	671

•Vanity Base Sink cabinets do not include a center mullion.



VBS2432.5C-VBS3632.5C
Butt doors

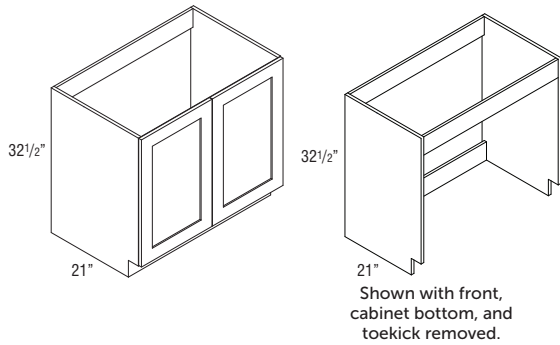
VANITY BASE SINK REMOVABLE

32 1/2" High

21" Deep

Model	Cubic Feet	1	2	3	4
VBSUFH3332.5C	14.3	371	413	476	529
VBSUFH3632.5C	15.5	429	479	552	614

- Cabinet must be supported on both sides. Not intended for end of run.
- Removable bottom and toekick.



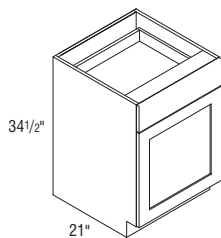
VANITY BASE SINGLE DOOR

34 1/2" High

21" Deep

Model	Cubic Feet	1	2	3	4
VB12C	5.6	238	264	305	339
VB15C	7.0	244	271	313	348
VB18C	8.3	255	285	328	365
VB21C	9.7	268	299	345	383
VB24C	11.1	317	352	408	453

- Cabinet hinged on the right; door may be flipped for left hinge application.

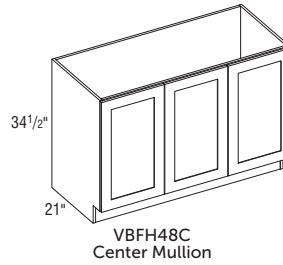
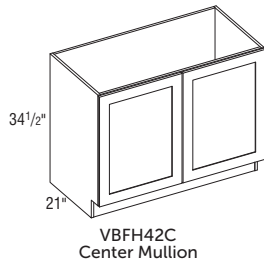
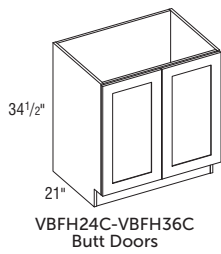


VANITY BASE FULL HEIGHT DOUBLE DOOR

34½" High

21" Deep

Model	Cubic Feet	1	2	3	4
VBFH24C	11.1	280	311	360	399
VBFH27C	12.4	292	326	376	418
VBFH30C	13.8	322	359	414	460
VBFH33C	15.1	340	379	437	486
VBFH36C	16.5	359	399	461	513
VBFH42C	19.2	390	434	502	558
VBFH48C	21.9	427	476	550	610

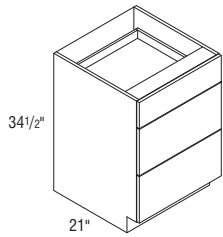


VANITY BASE DRAWER

34 1/2" High

21" Deep

Model	Cubic Feet	1	2	3	4
VBD12C	5.6	315	351	406	451
VBD15C	7.0	331	370	426	474
VBD18C	7.6	360	402	463	514
VBD21C	8.8	381	424	490	544
VBD24C	10.6	402	448	516	572

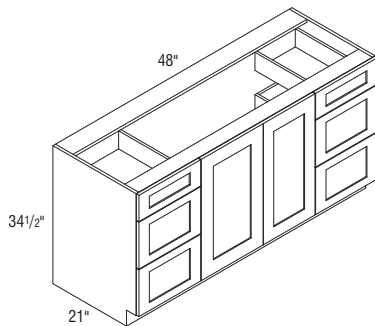


VANITY DOUBLE DRAWER BASE

34 1/2" High

21" Deep

Model	Cubic Feet	1	2	3	4
VDDDB48C	20.1	984	1077	1225	1383



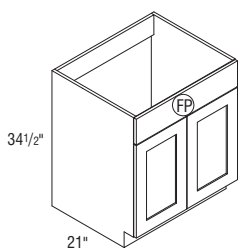
VANITY BASE SINK

34½" High

21" Deep

Model	Cubic Feet	1	2	3	4
VBS24C	11.3	301	335	386	429
VBS30C New	13.7	346	385	444	493
VBS36C New	16.4	384	427	493	547

•Vanity Base Sink cabinets do not include a center mullion.



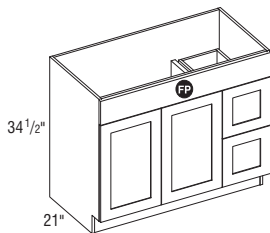
VANITY BASE SINK WITH DOORS AND DRAWERS

34½" High

21" Deep

Model	Cubic Feet	1	2	3	4
VBSD30C	13.8	415	462	533	592
VBSD36C	16.5	519	579	668	742

•Vanity Base Sink cabinets do not include a center mullion.



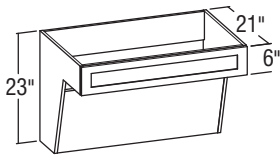
VANITY WALL SINK BASE

23" High

23" Deep

Model	Cubic Feet	1	2	3	4
VWSB30C	9.2	299	333	391	433
VWSB36C	11.1	336	370	433	476

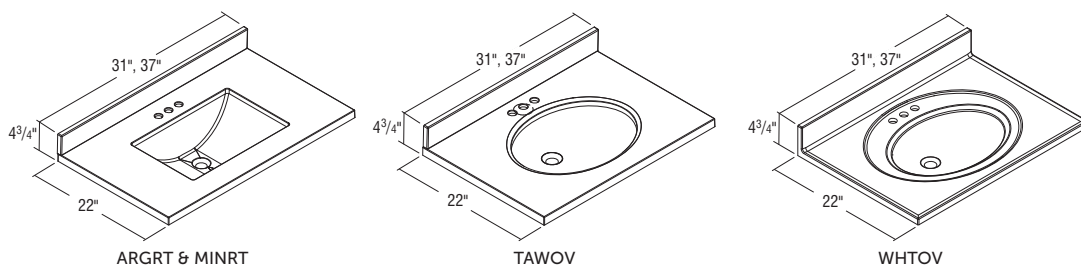
•Recommended installation height of 32 1/2" to allow sufficient toe clearance for Universal Design stand-alone vanity applications as a wall hanging unit.



VANITY TOPS

Model	Cubic Feet	1	2	3	4
VTOP3122	4.3	127	221	221	221
VTOP3722	5.2	148	258	258	258

- 31" Top fits a 30" wide x 21" deep vanity base sink cabinets.
- 37" Top fits a 36" wide x 21" deep vanity base sink cabinets.
- 4" center to center faucet drilling Argent, Mineral, and Tawny backsplash will be shipped loose with vanity top.



Price	Color	Bowl Shape	Backsplash	Countertop Thickness	Material
1	White (WHTOV)	Oval	3 3/4" integrated	1"	Cultured Marble
2	Tawny (TAWOV)	Oval	3 1/2" set on	1 1/4"	Solid Surface
3	Argent (ARGRT)	Rectangular	3 1/2" set on	1 1/4"	Solid Surface
4	Mineral (MINRT)	Rectangular	3 1/2" set on	1 1/4"	Solid Surface

VANITY SPLASH

Model	Cubic Feet	1	2	3	4
VSSPLASH	0.1	27	37	37	37

- Universal left or right application.

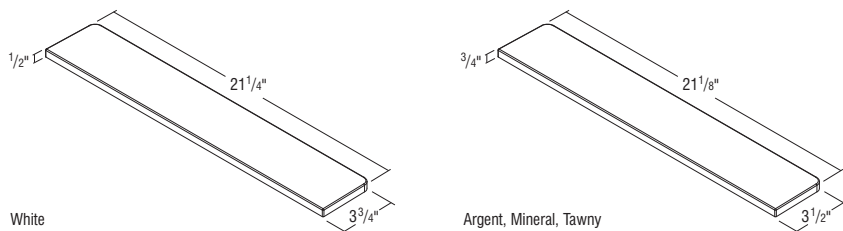


TABLE OF CONTENTS – FILLERS, PANELS, EMBELLISHMENTS, & MOULDING

Fillers59

Panels63

Embellishments67

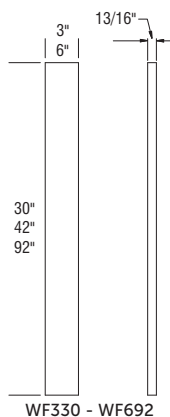
Wood Moulding69

Laminate Moulding72

WOOD FILLER

Model	Cubic Feet	Price
WF330	0.1	61
WF630	0.1	116
WF342	0.1	73
WF642	0.2	143
WF392	0.2	203
WF692	0.4	300

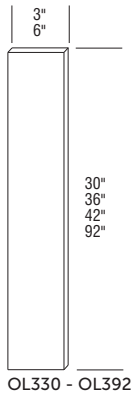
- Only available in Dusk, Polar and Sterling Gray.
- 13/16" thick wood finished on front side and 2 edges.
- Can also be used as Overlay Filler.



MELAMINE OR THERMOFOIL OVERLAY FILLER

Model	Cubic Feet	Price
OL330	0.1	37
OL630	0.1	82
OL336	0.1	44
OL342	0.1	46
OL392	0.2	58

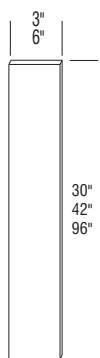
- Finished on front side and all edges.
- Fillers are meant to be flush with the door when installed, a backer may be required.
- 5/8" thick laminate furniture board.
- Cityscape, Haze, and Phantom overlay fillers in 30", 36", and 42" heights will have horizontal grain.
- 92" High Overlay Fillers will only be offered in Vertical Grain.



LAMINATE FILLER

Model	Cubic Feet	Price
F330	0.1	40
F630	0.1	77
F342	0.1	48
F642	0.2	93
F396	0.2	133
F696	0.4	197

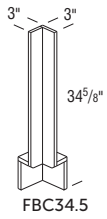
- 5/8" furniture board, laminate two sides (unfinished on all edges).
- Can be used as backer for Overlay.
- Filler Cityscape, Haze, and Phantom laminate fillers in 30" and 42" heights will have horizontal grain.
- 96" High Fillers will only be offered in Vertical Grain.
- Edgetape (ET) required to finish edges.



LAMINATE FILLER BASE CORNER

Model	Cubic Feet	Price
FBC34.5	1.1	76

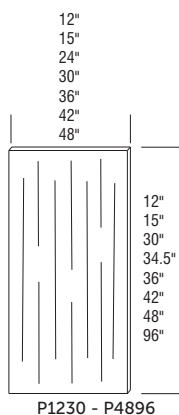
- 5/8" thick furniture board laminated on two sides (unfinished on all edges).
- Edgetape (ET) required to finish edges.
- Cityscape, Haze, and Phantom will have horizontal grain.
- Trimmable to accommodate additional heights.



LAMINATE PANEL

Model	Cubic Feet	Price
P1230	0.3	46
P3012	0.3	50
P1242	0.3	59
P4212	0.3	64
P1515	0.2	22
P2434.5	0.6	88
P3648	1.2	83
P4836	1.2	83
P2496	1.5	191
P3696	2.3	198
P4896	3.1	204

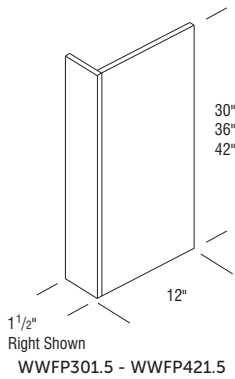
- 5/8" thick furniture board laminated on two sides.
- Edgebanded on one long edge.
- Edgetape (ET) required to finish remaining edges.
- Grain direction will follow the 2nd dimension.
- Trimnable to accommodate additional heights.



WOOD WALL FILLER PANEL

Model	Cubic Feet	Price
WWFP301.5	0.5	74
WWFP361.5	0.6	85
WWFP421.5	0.7	99

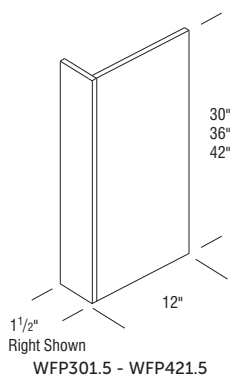
- Finished on front, side, top and bottom.
- Overlay profiled filler can be added to slab filler.
- 3/4" thick.
- Panels are vertical grain.



LAMINATE WALL FILLER PANEL (SLAB)

Model	Cubic Feet	Price
WFP301.5	0.5	43
WFP361.5	0.6	55
WFP421.5	0.6	68

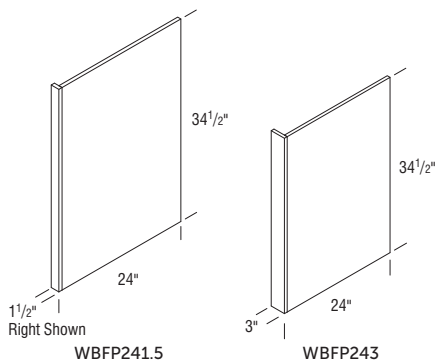
- Finished on front, side, top and bottom.
- Overlay profiled filler can be added to slab filler.
- 5/8" thick furniture board.
- Panels offered in vertical grain.
- Horizontal Grain Laminate Filler available on Cityscape, Haze, and Phantom Finishes.
- Vertical Grain Fillers not available on Cityscape, Haze, and Phantom Finishes.



WOOD BASE FILLER PANEL

Model	Cubic Feet	Price
WBFP241.5	0.9	126
WBFP243	1.5	134

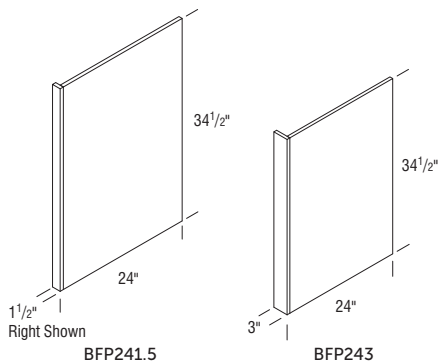
- Finished on front, side, top and bottom.
- Overlay profiled filler can be added to slab filler.
- 3/4" thick.
- Panels offered in vertical grain.



LAMINATE BASE FILLER PANEL (SLAB)

Model	Cubic Feet	Price
BFP241.5	0.8	95
BFP243	1.5	103

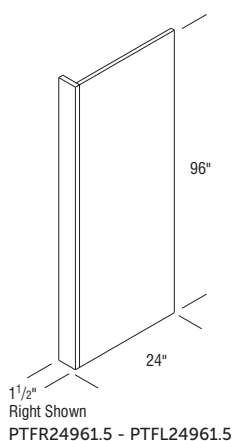
- Finished on front and side.
- Can be used for either left or right applications.
- Overlay profiled filler can be added to slab filler.
- 5/8" thick furniture board.
- Panels offered in vertical grain.
- Cityscape, Haze, and Phantom will have horizontal grain.



LAMINATE TALL FILLER PANEL (SLAB)

Model	Cubic Feet	Price
PTFR24961.5	2.8	371
PTFL24961.5	2.8	371

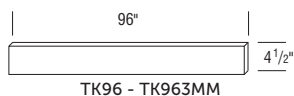
- Finished on front and side (reversible).
- Overlay filler can be added to slab filler.
- 5/8" thick furniture board.
- 96" High panel will only be offered in vertical grain.



LAMINATE TOEKICK

Model	Cubic Feet	Price
TK96	0.3	33
TK963MM	0.3	24

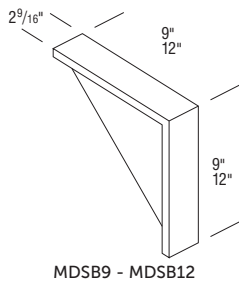
- All edges unfinished.
- Edgetape (ET) required to finish edges.
- TK96 is 5/8" thick laminate furniture board.
- TK963MM is 2.5mm thick laminate MDF.



LAMINATE DINING SHELF BRACKET

Model	Cubic Feet	Price
MDSB9	0.1	100
MDSB12	0.1	120

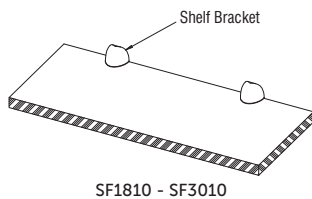
- All edges unfinished.
- Edgetape (ET) required to finish edges.
- MDSB9 is 5/8" thick laminate furniture board.
- MDSB12 is 2.5mm thick laminate MDF.



LAMINATE FLOATING SHELVES

Model	Cubic Feet	Price
SF1810	0.5	120
SF3010	0.9	133

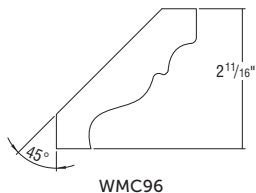
- Includes two shelf brackets.
- Not trimmable.
- Shelf Brackets are adjustable.



WOOD MOULDING CROWN

Model	Cubic Feet	Price
WMC96	0.5	155

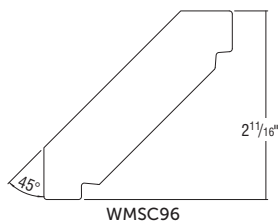
- All 96" mouldings will be supplied as 96" nominal.
- Wood mouldings are available in Dusk, LedgeStone, Polar and Sterling Gray.



WOOD MOULDING SHAKER CROWN

Model	Cubic Feet	Price
WMSC96	0.5	196

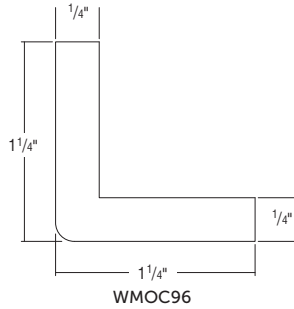
- All 96" mouldings will be supplied as 96" nominal.
- Wood mouldings are available in Dusk, LedgeStone, Polar and Sterling Gray.



WOOD MOULDING OUTSIDE CORNER

Model	Cubic Feet	Price
WMOC96	0.5	62

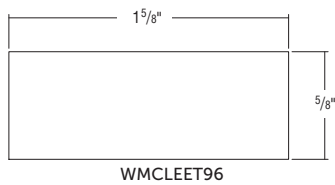
- All 96" mouldings will be supplied as 96" nominal.
- Wood mouldings are available in Dusk, LedgeStone, Polar and Sterling Gray.



WOOD MOULDING CLEAT

Model	Cubic Feet	Price
WMCLEET96	0.5	109

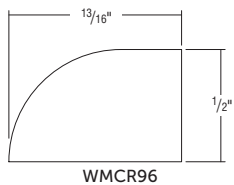
- All 96" mouldings will be supplied as 96" nominal.
- Wood mouldings are available in Dusk, LedgeStone, Polar and Sterling Gray.



WOOD MOULDING CORNER ROUND

Model	Cubic Feet	Price
WMCR96	0.5	73

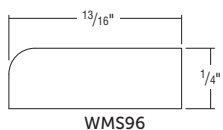
- All 96" mouldings will be supplied as 96" nominal.
- Wood mouldings are available in Dusk, LedgeStone, Polar and Sterling Gray.



WOOD MOULDING SCRIBE

Model	Cubic Feet	Price
WMS96	0.5	32

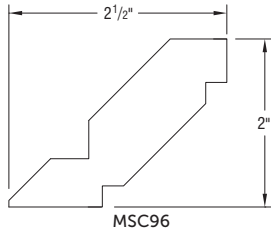
- All 96" mouldings will be supplied as 96" nominal.
- Wood mouldings are available in Dusk, LedgeStone, Polar and Sterling Gray.



MOULDING SHAKER CROWN

Model	Cubic Feet	Price
MSC96	0.5	128

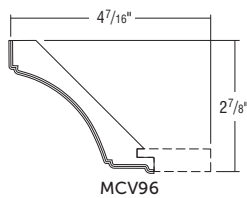
- All 96" mouldings will be supplied as 96" nominal.
- All moulding is MDF laminate wrapped.



COVE MOULDING

Model	Cubic Feet	Price
MCV96	0.5	238

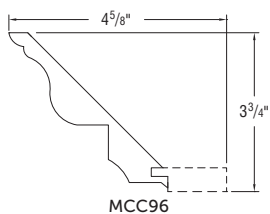
- All 96" mouldings will be supplied as 96" nominal.
- All moulding is MDF laminate wrapped.
- Optional ATTICLEET1.
- Shown with ATTICLEET1.



CLASSIC CROWN MOULDING

Model	Cubic Feet	Price
MCC96	0.5	217

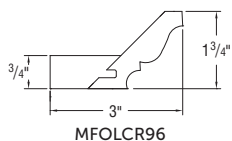
- All 96" mouldings will be supplied as 96" nominal.
- All moulding is MDF laminate wrapped.
- Optional ATTICLEET1.
- Shown with ATTICLEET1.



MOULDING FULL OVERLAY CROWN

Model	Cubic Feet	Price
MFOLCR96	1.0	144

- All 96" mouldings will be supplied as 96" nominal.
- All moulding is MDF laminate wrapped.
- Optional ATTICLEET2.



ATTACHMENT CLEAT

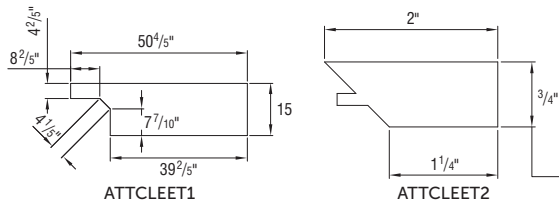
Model	Cubic Feet	Price
ATTCLEET1	0.1	39
ATTCLEET2	0.2	39

ATTCLEET1

- Attachment Cleat for Cove Moulding and Classic Crown Moulding.

ATTCLEET2

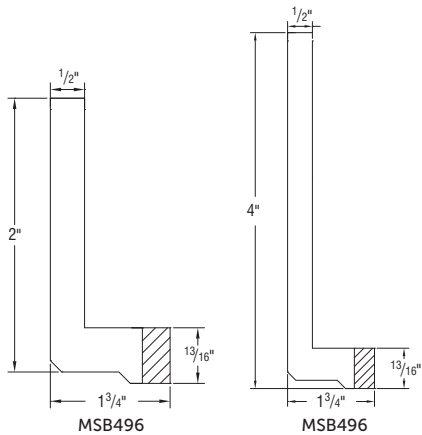
- Attachment Cleat for Moulding Full Overlay Crown.



SUBMOULDING

Model	Cubic Feet	Price
MSB296	0.5	173
MSB496	0.5	289

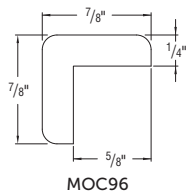
- All 96" mouldings will be supplied as 96" nominal.
- All moulding is MDF laminate wrapped.



MOULDING OUTSIDE CORNER

Model	Cubic Feet	Price
MOC96	0.5	41

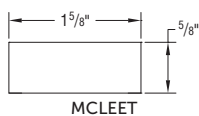
- All 96" mouldings will be supplied as 96" nominal.
- All moulding is MDF laminate wrapped.



CLEAT

Model	Cubic Feet	Price
MCLEET	0.3	16

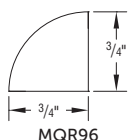
- All 96" mouldings will be supplied as 96" nominal.
- All moulding is MDF laminate wrapped.



QUARTER ROUND MOULDING

Model	Cubic Feet	Price
MQR96	0.5	46

- All 96" mouldings will be supplied as 96" nominal.
- All moulding is MDF laminate wrapped.



SCRIBE MOULDING

Model	Cubic Feet	Price
MS96	0.5	20

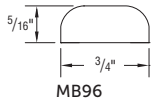
- All 96" mouldings will be supplied as 96" nominal.
- All moulding is MDF laminate wrapped.



BATTEN MOULDING

Model	Cubic Feet	Price
MB96	0.5	28

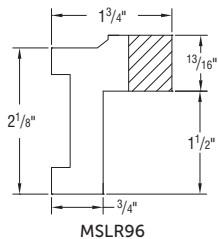
- All 96" mouldings will be supplied as 96" nominal.
- All moulding is MDF laminate wrapped.



STRAIGHT LIGHT RAIL

Model	Cubic Feet	Price
MSLR96	0.5	359

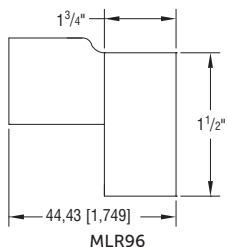
- All 96" mouldings will be supplied as 96" nominal.
- All moulding is MDF laminate wrapped.



BASIC LIGHT RAIL MOULDING

Model	Cubic Feet	Price
MLR96	0.5	237

- All 96" mouldings will be supplied as 96" nominal.
- All moulding is MDF laminate wrapped.



EDGE MOULDING

Model	Cubic Feet	Price
ME96	0.5	62

- All 96" mouldings will be supplied as 96" nominal.
- All moulding is MDF laminate wrapped.

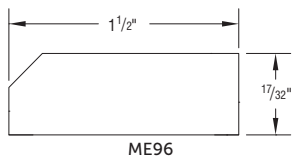


















TABLE OF CONTENTS – ACCESSORIES

Decorative Hardware79
Roll Tray Kits80
Accessories81

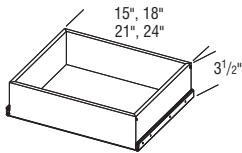
DECORATIVE HARDWARE - KNOBS AND PULLS

	Product Code	Collection	Description	Finish/Color	Drill Center	Price
	H401	Milan	Knob 1 1/2"	Satin Nickel	N/A	10
	H402	Milan	Pull 6 1/8"	Satin Nickel	3 25/32"	14
	H403	Milan	Pull 8 1/8"	Satin Nickel	5 1/32"	19
	H404	Milan	Pull 11 15/16"	Satin Nickel	8 13/16"	23
	H405	Milan	Pull 19 1/2"	Satin Nickel	16 3/8"	39
	H406	Alba	Pull 6 1/4"	Satin Nickel	5 1/32"	14
	H407	Manchester	Pull 4 1/8"	Polished Chrome	3 25/32"	14
	H408	Manchester	Pull 7 15/16"	Polished Chrome	7 9/16"	29
	H409	Carlisle	Knob 1 1/8"	Satin Nickel	N/A	10
	H410	Zaila	Knob 1 3/16"	Satin Nickel	N/A	12
	H411	Jasper	Knob 1 3/16"	Satin Nickel	N/A	8
	H412	Austin	Pull 3 3/8"	Satin Nickel	3"	12
	H413	Verso	Pull 1 1/2"	Satin Nickel	N/A	6
	H414	Brezza	Pull 4 1/2"	Satin Nickel	3 25/32"	12
	H415	Jasper	Knob 1 3/16"	Oil Rubbed Bronze	N/A	8
	H416	Jasper	Knob 1 3/16"	Chrome	N/A	8

ROLL TRAY KITS

Model	Cubic Feet	Price
RO15	0.5	77
RO18	0.8	79
RO21	0.9	81
RO24	1.0	84

- 5/8" plywood box roll tray with undermount, full extension guides.
- RO15-RO24 kits contain 1 roll tray, roll tray brackets, hardware, and screws.
- RO42 kits contain 2 roll trays, roll tray brackets, hardware, and screws.
- Exterior dimensions of roll trays are 21" deep x 3 3/8" tall (fits standard 24" deep cabinet).



Width	Application
15"	B15, B15FH, B1532.5
18"	B18, B18FH, B1832.5, U18
21"	B21, B2132.5, B21FH
24"	B24, B24FH, B2432.5, U24

EDGE TAPE PVC

Model	Cubic Feet	Price
ET	0.3	13

- 3/4" peel and stick PVC is available in all colors; application may require staples.
- Indicate color.
- Available in roll lengths of 25' only.

TOUCH UP KIT

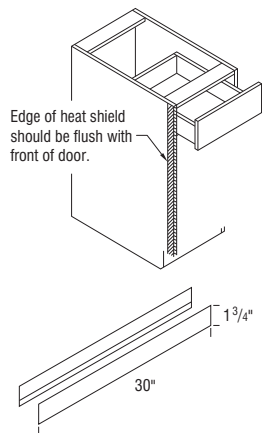
Model	Cubic Feet	Price
TUKIT	0.2	39

- One pen, two fill sticks and one marker.
- Indicate color.

HEAT SHIELD

Model	Cubic Feet	Price
HSS	0.1	107

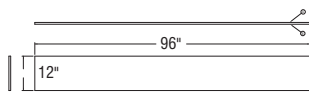
- Protects cabinet doors from excess oven heat discharged during oven cleaning process.
- Two heat shield strips per order.
- High temperature adhesive tape included.
- Warranty will be void without properly installed heat shield.



SHELF KIT

Model	Cubic Feet	Price
SK1296	1.0	61
SK1296U	0.5	74

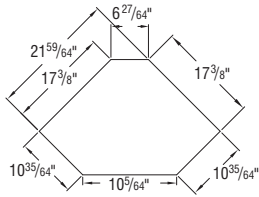
- Shelf Kit is available in white only.
- 16 shelf clips included. If additional clips required order from SKU SC4.
- SK1296 is 5/8" thick laminate.
- SK1296U is 3/4" thick laminate.



WALL DIAGONAL SHELF KITS

Model	Cubic Feet	Price
WDCSK24	0.5	40
WDCSK27	0.6	46

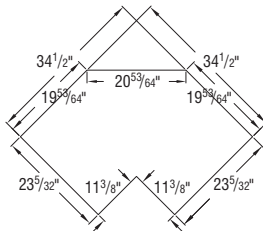
- 5/8" thick laminate.
- Shelf Kit is available in white only.
- 4 shelf clips included. If additional clips required order from SKU SC4.



BASE EASY REACH SHELF KITS

Model	Cubic Feet	Price
BERSK36	1.1	78

- 5/8" thick laminate.
- Shelf Kit is available in white only.
- 4 shelf clips included. If additional clips required order from SKU SC4.



SHELF CLIPS

Model	Cubic Feet	Price
SC4	0.1	12

- Quantity pack of 4.

BUMPERS

Model	Cubic Feet	Price
BP55	1.0	4

•55 bumpers per order.

STANDARD SOFT-CLOSE HINGE

Model	Cubic Feet	Price
STDHIN	0.1	23

•Pack of 2.

45 DEGREE HINGE

Model	Cubic Feet	Price
45HIN	0.1	18

- Used on Wall Diagonal Corner Cabinets.
- Pack of 2.
- Not available on soft-close.

170 DEGREE HINGE

Model	Cubic Feet	Price
170HIN	0.1	30

- Used on Base Easy Reach Cabinet to hinge door to cabinet.
- Pack of 2.
- Not available on soft-close.

105 DEGREE HINGE

Model	Cubic Feet	Price
105HIN	0.1	29

- Used on Base Corner Roto Cabinet to hinge door to door.
- Pack of 2.
- Not available on soft-close.

WALL LIFT UP HINGE

Model	Cubic Feet	Price
WLUHIN	0.1	65

- Used on Wall Lift Up Cabinets.
- Pack of 2.
- Not available in soft-close.

BASE DRAWER EPOXY GLIDE SET (20")

Model	Cubic Feet	Price
VDS	0.2	20

- Include left and right glides for drawer and end panel (total of 4 pieces).

LAZY SUSAN SET

Model	Cubic Feet	Price
BCR	2.5	233

- Includes 2 trays, pole and screws.

WALL FLOATING SHELF BRACKET

Model	Cubic Feet	Price
WCFS	0.1	218

- Includes one bracket per order.

PAN WASHER SCREWS

Model	Cubic Feet	Price
PWS	0.1	20

- Used for installation of cabinets.
- #8, 2 1/2" in length.
- Pack of 50.

LOW ROOT SCREWS

Model	Cubic Feet	Price
LRS	0.1	15

- Used to attach cabinet boxes together.
- #8, 1" in length.
- Pack of 50.

EURO SCREW LONG

Model	Cubic Feet	Price
ESDGSL	0.1	26

- Pack of 50.
- Used to install epoxy long drawer glide.

EURO SCREW SHORT

Model	Cubic Feet	Price
ESDGSS	0.1	23

- Pack of 50.
- Used to install for short epoxy drawer glide.

NAIL SCREWS

Model	Cubic Feet	Price
NSDBS	0.1	19

- Pack of 50.
- Used to install drawer glides to drawer box.

MDF BACKING

Model	Cubic Feet	1	2	3	4
BACK4896	0.3	129	149	154	154

- 3mm interior backing panel material 48 x 96.
- Add 3-letter suffix; see table.

SKU Suffix			
1	2	3	4
SWH - Smooth White	ASH - Ash	NSH - Nightshade	CYS - Cityscape
	DSK - Dusk	PTY - Putty	HAZ - Haze
	LED - Ledgestone	PLR - Polar	PHM - Phantom
	PAM - Pampas	STG - Sterling Gray	

TERMS, CONDITIONS & WARRANTIES

Warranty

•<https://www.urbanacabinets.com/warranty>

Installation Instructions

•<https://www.masterbrand.com/installation>

Care and Cleaning

•<https://masterbrand.com/care-and-cleaning>

Humidification

•<https://www.masterbrand.com/humidification>

URBANA™

CABINET CO.

Effective November 30, 2020. Supersedes all prior versions. Styles, product availability and construction may vary slightly from those shown in this book due to material availability and/or design evolution. Specifications are subject to change without notice. Our customer service team is available if your design requires verification of product availability and specifications.

Product photography and illustrations have been reproduced as accurately as printing technologies permit. To ensure highest satisfaction, we strongly recommend you view an actual sample for best color, wood grain and finish representation.

CUSTOMER SERVICE

urbanacs@masterbrand.com
812-634-0561



Part of the
MasterBrand™
Family

urbanacabinets.com

#UrbanaCabinets

© 2020 MasterBrand Cabinets, Inc. All rights reserved.